



UNIVERSITY
OF WARSAW

Polish Centre of
Mediterranean Archaeology



Title: The tombs of Asasif: archaeological exploration in the 2013/2014 season

Author(s) : *Patryk Chudzik*

Journal: *Polish Archaeology in the Mediterranean* 24/1 (*Research*)

Year: 2015

Pages: 701 - 707

ISSN 1234–5415 (Print), ISSN 2083–537X (Online)

Publisher: Polish Centre of Mediterranean Archaeology, University of Warsaw (PCMA UW),
Wydawnictwa Uniwersytetu Warszawskiego (WUW)

www.pcma.uw.edu.pl www.wuw.edu.pl

Abstract: In the 2013/2014 season, a Polish team from the University of Wrocław started work in the northern part of the Asasif necropolis, near the Temple of Queen Hatshepsut in Deir el-Bahari. An archaeological survey was carried out on the Asasif slope. Cleaning work and documentation were undertaken of the architecture of four private tombs: MMA 509/TT 312, MMA 512, MMA 513/TT 314 and MMA 514, as well as the archaeological finds thereof. The rock-cut tombs belong to a Middle Kingdom necropolis and were all reused in later times, especially in the Third Intermediate Period and Late Period.

Keywords: Theban Necropolis, Asasif, Middle Kingdom, Horhotep, private rock-cut tombs

مقابر العساسيف / التنقيب عن الآثار لموسم 2013- 2014

Patryk Chudzik

الملخص: في موسم 2013-2014 , بدأ الفريق البولندي من جامعة فروتسواف العمل في الجزء الشمالي من مقابر العساسيف بالقرب من معبد الملكة حنشبسوت في الدير البحري . وتم عمل المسح الأثري في منحدر العساف , وأجريت أعمال التنظيف والتوثيق للتصميم الهندسي لأربع قبور خاصة هي : MMA 509/TT MMA 512, MMA 513/TT, MMA 312 و MMA 314 بالإضافة إلى المكتشفات الأثرية، المقابر الصخرية تعود إلى مقبرة من الدولة الوسطى والتي قد أعيد إستعمالها في أوقات لاحقة خاصة في عصر الإنتقال الثالث والعصر المتأخر.

POLISH ARCHAEOLOGY IN THE MEDITERRANEAN (PAM)
Annual of the Polish Centre of Mediterranean Archaeology, University of Warsaw

Editorial Board

Piotr Bieliński
Krzysztof M. Ciałowicz
Wiktor Andrzej Daszewski
Michał Gawlikowski
Włodzimierz Godlewski
Karol Myśliwiec
Tomasz Waliszewski

International Advisory Board

Jean Charles Balty
Charles Bonnet
Giorgio Buccellati
Stan Hendrickx
Johanna Hlaubek

Peer-reviewed by members of the *PAM* committee of independent reviewers.
<http://www.pcma.uw.edu.pl/en/pam-journal/pam-independent-reviewers/>

POLISH CENTRE OF MEDITERRANEAN ARCHAEOLOGY
UNIVERSITY OF WARSAW

POLISH ARCHAEOLOGY IN THE MEDITERRANEAN

XXIV/1

RESEARCH



ABBREVIATIONS

| | |
|---------------|---|
| <i>AA</i> | <i>Archäologischer Anzeiger; Jahrbuch des Deutschen Archäologischen Instituts</i> (Berlin) |
| <i>ANM</i> | <i>Archéologie du Nil Moyen</i> (Lille) |
| <i>ASAE</i> | <i>Annales du Service des Antiquités de l'Égypte</i> (Cairo) |
| <i>AV</i> | <i>Archäologische Veröffentlichungen, Deutsches Archäologisches Institut, Abteilung Kairo</i> (Berlin–Mainz am Rhein) |
| <i>BAAL</i> | <i>Bulletin d'archéologie et d'architecture libanaises</i> (Beirut) |
| <i>BAH</i> | <i>Bibliothèque archéologique et historique</i> (Paris) |
| <i>BAR IS</i> | <i>British Archaeology Reports International Series</i> (Oxford) |
| <i>BASOR</i> | <i>Bulletin of the American Schools of Oriental Research</i> (Ann Arbor, MI) |
| <i>BCH</i> | <i>Bulletin de correspondance hellénique</i> (Paris) |
| <i>BdE</i> | <i>Bibliothèque d'étude</i> (Cairo) |
| <i>BIFAO</i> | <i>Bulletin de l'Institut français d'archéologie orientale</i> (Cairo) |
| <i>BSAA</i> | <i>Bulletin de la Société d'archéologie d'Alexandrie</i> (Cairo) |
| <i>BSFE</i> | <i>Bulletin de la Société française d'égyptologie</i> (Paris) |
| <i>CCE</i> | <i>Cahiers de la céramique égyptienne</i> (Cairo) |
| <i>EtTrav</i> | <i>Études et travaux. Travaux du Centre d'archéologie méditerranéenne de l'Académie des sciences polonaise</i> (Warsaw) |
| <i>FIFAO</i> | <i>Fouilles de l'Institut français d'archéologie orientale</i> (Cairo) |
| <i>GAMAR</i> | <i>Gdańsk Archaeological Museum African Reports</i> (Gdańsk) |
| <i>GM</i> | <i>Göttinger Miszellen</i> (Göttingen) |
| <i>IAMS</i> | <i>Institute of Archaeo-Metallurgical Studies</i> (London) |
| <i>JARCE</i> | <i>Journal of the American Research Center in Egypt</i> (Boston–Princeton–New York–Cairo) |
| <i>JEJ</i> | <i>Journal of Egyptian Archaeology</i> (London) |
| <i>JGS</i> | <i>Journal of Glass Studies</i> (Corning, NY) |
| <i>JJP</i> | <i>Journal of Juristic Papyrology</i> (Warsaw) |
| <i>JRS</i> | <i>Journal of Roman Studies</i> (London) |
| <i>MDAIK</i> | <i>Mitteilungen des Deutschen Archäologischen Instituts, Abteilung Kairo</i> (Wiesbaden) |
| <i>OIP</i> | <i>Oriental Institute Publications</i> (Chicago) |
| <i>OLA</i> | <i>Orientalia lovaniensia analecta</i> (Louvain) |
| <i>PAM</i> | <i>Polish Archaeology in the Mediterranean</i> (Warsaw) |
| <i>PSAS</i> | <i>Proceedings of the Seminar for Arabian Studies</i> (London) |
| <i>SAAC</i> | <i>Studies in Ancient Art and Civilisation</i> (Kraków) |
| <i>SAK</i> | <i>Studien zur altägyptischen Kultur</i> (Hamburg) |
| <i>SAOC</i> | <i>Studies in Ancient Oriental Civilization</i> (Chicago) |
| <i>WVDOG</i> | <i>Wissenschaftliche Veröffentlichungen der deutschen Orient-Gesellschaft</i> (Berlin–Leipzig) |

THE TOMBS OF ASASIF: ARCHAEOLOGICAL EXPLORATION IN THE 2013/2014 SEASON

Patryk Chudzik

University of Wrocław

Abstract: In the 2013/2014 season, a Polish team from the University of Wrocław started work in the northern part of the Asasif necropolis, near the Temple of Queen Hatshepsut in Deir el-Bahari. An archaeological survey was carried out on the Asasif slope. Cleaning work and documentation were undertaken of the architecture of four private tombs: MMA 509/TT 312, MMA 512, MMA 513/TT 314 and MMA 514, as well as the archaeological finds thereof. The rock-cut tombs belong to a Middle Kingdom necropolis and were all reused in later times, especially in the Third Intermediate Period and Late Period.

Keywords: Theban Necropolis, Asasif, Middle Kingdom, Horhotep, private rock-cut tombs

In the 2013/2014 season, a team of Polish archaeologists from the Institute of Archaeology, University of Wrocław, started a project to document private tomb architecture of the Middle Kingdom in the northern part of the Asasif necropolis [*Fig. 1*]. Comprehensive archaeological and architectural recording of the tombs on the Asasif slope (excavated earlier in 1922–1923 and 1925–1927 by the Egyptian Expedition of the Metropolitan Museum of Art directed by Herbert E. Winlock, see Winlock 1922: 32–49; 1923: 11–22; 1928: 11–18; 1942: 68–83, 122–131; 1945) will enable in-depth analysis of the architecture of these sepulchers belonging to high-ranking officials from the reign of Nebhepetre Mentuhotep II and successive rulers of the Eleventh and Twelfth Dynasties (Winlock 1947: 44–48; Hayes 1968: 163–166; Allen 1996; 2003;

Soliman 2009: 95–119, 126–129). Moreover, it will enhance understanding of the processes shaping this part of the Theban Necropolis during the initial development of the burial ground and later reuse.

ARCHAEOLOGICAL FIELDWORK

Fieldwork was carried out first in four tomb complexes: MMA 509/TT 312, MMA 512, MMA 513/TT 314 and MMA 514. The courtyards and their immediate vicinity were surveyed, collecting artifacts, mainly elements of funerary equipment, dated from the Middle Kingdom [*Fig. 2*] to the Roman period. Areas adjacent to the brick and fieldstone walls were uncovered and cleaned in order to reveal the lowermost parts of these structures and enable a full documentation of the courtyard architecture. An exploration of the interior of the tombs was undertak-

en for the same purpose, removing modern debris due to the erosion of rock ceilings (e.g. MMA 512 and MMA 513/TT 314) and discovering undisturbed layers related to the original use of the tombs despite the earlier digging inside the tombs.

MMA 509/TT 312

The work in complex MMA 509/TT 312 was concentrated on the upper and lower parts of the courtyard. The mud-brick facade and part of the entrance corridor were cleaned, revealing a floor dated to the Middle Kingdom, made of high quality sandstone and limestone slabs. The upper parts of the fill yielded elements of funerary equipment: shabti figurines, wooden fragments of sarcophagi and fragments of cartonnages, as well as fragments of

mummified human remains. The uppermost layer contained waste, such as newspaper fragments and cigars, left there by modern-era explorers of this tomb.

In the upper part of the courtyard, excavations revealed the west side of the mud-brick facade and its joining to the field-stone wall of the courtyard. A pile of human remains and cartonnages lay about 15 m from the entrance, on the axis of the complex. They came probably from one of the tombs and were part of a Late Period burial [Fig. 3].

The work in the lower part of the complex uncovered damaged architectural features covered by later structures. Sections of the stone wall of the courtyard were found in the eastern part, largely destroyed by the construction of the

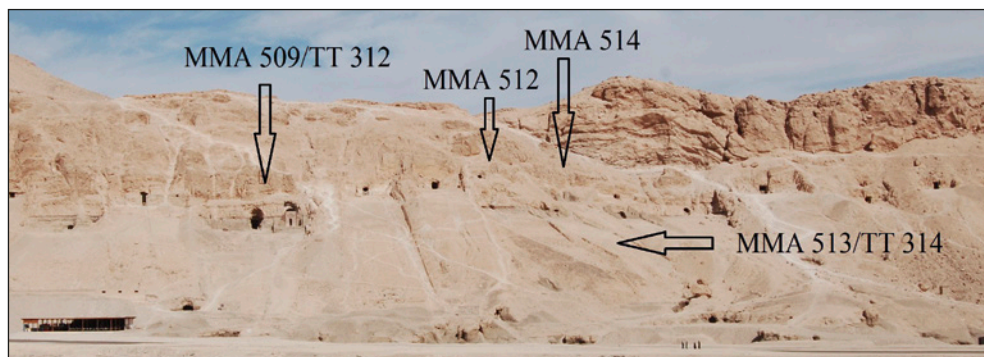


Fig. 1. The necropolis in North Asasif seen from the south
(Photo P. Chudzik)

Team

Dates of work: 2 December 2013–13 January 2014; 14–23 February 2014

Director: Patryk Chudzik, archaeologist (Institute of Archaeology, University of Wrocław)

MSA representatives: Asmaa Sayed Ahmed Mahmoud, Mahmoud Mohammed el Azab

Architect: Mariusz Caban (Faculty of Architecture, Wrocław University of Technology)

Ceramologist: Dr. Teodozja I. Rzeuska (Institute of Mediterranean and Oriental Cultures, Polish Academy of Sciences)

Documentalist: Monika Sieradzka (freelancer)

Student-trainee: Adam Grylak (Institute of Archaeology, University of Wrocław)

Late Period tomb of vizier Nespakashuti. Remains of a causeway, 8 m wide, connected with this late tomb, were located on the axis of the Twenty-sixth Dynasty tomb. The structure was formed of rock debris between retaining side walls and high quality limestone blocks in its lower part. Some of the blocks came from one of the Eighteenth Dynasty Temples of a Million of Years at Deir el-Bahari (M. Caban, personal communication). Among the archaeological finds which represented mainly the Middle Kingdom and the Late Period, there was also a New Kingdom wooden votive ear dedicated to the god Ptah (Sadek 1987: 100–107). The main area of the cult of this particular god in the Theban necropolis was Deir el-Medina (Sadek 1987: 72–74, 83).

Two phases of the use of funerary complex MMA 509/TT 312 were distinguished based on the evidence supplied by the finds. The original tomb was located in the center of the facade and belonged to one of the high court officials of the Eleventh Dynasty ruler Nebhepetre Mentuhotep II (Allen 1996: 12). The second phase can be dated to the Twenty-sixth Dynasty, when a new tomb was cut in the eastern side of the facade. It was the burial place of the mayor of Thebes and vizier Nespakashuti. (Winlock 1923: 20–23; Pischikova 1998). Remains of Late Period burials were found in both tombs and in the courtyard and it seems that more than just the vizier's burial can be attributed to this period.

MMA 512

Exploration of the courtyard and entrance corridor of tomb MMA 512 made it

possible to reconstruct the building phases of the complex. Walls of field-stone were built only on the east and west sides of the courtyard. On the west side, about 20 m from the entrance to the tomb, the wall turns at an angle approximately 120° to the east. From this point it preserves only two courses of stones. Possibly it was an effect of sudden death of the tomb owner, which happened before the complex work was finished. Thanks to this, natural layers of slope which had remained from the Dynastic period were recognized. About 700 flint artifacts were found in this area.¹

The poor condition of the rock face in this area of the gebel was probably the reason why the entrance to the tomb was shifted off axis. Cleaning of the facade revealed a rock step located in front of the tomb entrance.² A fragment of a brick wall up to the second layer of construction was found in the entrance. It could be part of the brick door frame.

The material represents mainly Middle Kingdom funerary equipment: offering jars and fragments of wooden boxes and coffins. Found near the tomb entrance were clay offering trays (for similar objects, see Niwiński 1975: 85–92). Faience beads from a Middle Kingdom collar were discovered on the east side of the courtyard, near the stone wall; the collar had belonged probably to the owner of the tomb (for the similar Middle Kingdom broad collar found at Thebes see: Winlock 1940: 253–256, Fig. 4; Roehrig 2002: 15, Fig. 21; 2003). To the east of a doorway, a wooden female figurine has been revealed [Fig. 4]. A statue represents a woman sitting on the chair, probably a wife of the tomb

¹ A survey in the area by a Jagiellonian University expedition in 1972 yielded artifacts which were dated to the Middle Paleolithic Period (area No. 24, see Drobniwicz, Ginter, and Kozłowski 1976: 17, Pl. 1).

² Similar steps are known from Theban tombs MMA 508/TT 311 and MMA 510/TT 313.



Fig. 2. Wooden steps from a Middle Kingdom model of a slaughterhouse; courtyard of the funerary complex of Horhotep (MMA 513/TT 314) (Photo P. Chudzik)

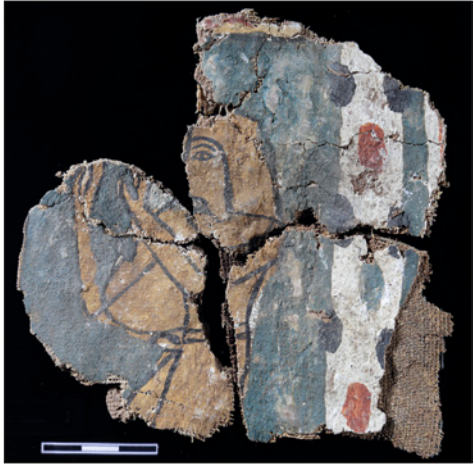


Fig. 3. Late Period cartonnage fragment with a representation of the deceased raising his arms in adoration (Photo M. Jawornicki)



Fig. 4. Wooden female figurine from the courtyard of tomb MMA 512 (Photo M. Jawornicki)



Fig. 5. Fragment of a limestone stopper from a canopic jar representing the human-headed Imsety; Eighteenth Dynasty burial, funerary complex MMA 514 (Photo M. Jawornicki)

owner.³ Fragments of burial equipment dated to the Third Intermediate Period, mainly clay and faience shabti figurines and faience beads from nets covering the wrapped bodies of the deceased, were also discovered.

MMA 513/TT 314

Excavations in the funerary complex MMA 513/TT 314, which belonged to an official named Horhotep (Maspero 1906: 84–88), were located in the courtyard. In the lower part of the courtyard, the work revealed remains of a small mud-brick building [Fig. 6]. Associated with this structure were potsherds [Fig. 7], a limestone altar fragment and a flint “knife”. The location of the structure, its size and building technique, as well as the finds suggest a small shrine for offerings made to

the dead after the entrance to the tomb had been sealed. A similar structure stood once in the courtyard of the tomb of Henenu (MMA 510/TT 313) (Winlock 1923: 20; 1942: 68)

An accompanying tomb was found next to the enclosure wall about 15 m from the tomb facade in the western part of the courtyard. The entrance was located in the rock under the courtyard wall. A small hole opened into the shaft leading to the tomb, but the actual entrance was located 3 m to the east of the courtyard wall. The location is atypical for accompanying tombs from the Theban necropolis, which were all found under or in the rocks behind the courtyard walls (Winlock 1920: 31–32, Fig. 4; 1922: 37–38). Archaeological finds recovered from the backfill: pottery, shabti figurines and wooden elements of



Fig. 6. Remains of a mud-brick shrine in the lower end of the courtyard of the Horhotep funerary complex (MMA 513/TT 314) (Photo P. Chudzik)

³ In the 1922/1923 season the Metropolitan Museum Egyptian Expedition working in tomb MMA 512 discovered a wooden stela of Nebseni (presumed owner of the tomb) and his wife Henenu. The decoration of this small stela of the rectangular type represents a provincial style typical of the Theban Eleventh Dynasty (Hayes 1968: 330, Fig. 218; MMA No. 26.3.237).



Fig. 7. Fill of a shrine containing a deposit of small ovoid jars left by the family of deceased (Photo P. Chudzik)

chests and coffins, indicate that the tomb was constructed in the Middle Kingdom and reused in the Late Period.

MMA 514

A similar chronological sequence was observed in the other Middle Kingdom tomb complex, MMA 514. Work inside the tomb, concentrated in the corridor near the entrance, yielded material from the Middle Kingdom as well as the Third Intermediate Period and the Late Period. Shabti figurines, cartonnages, fragments of wooden sarcophagi and chests dated to the Third Intermediate Period and Late Period were found in the fill of the

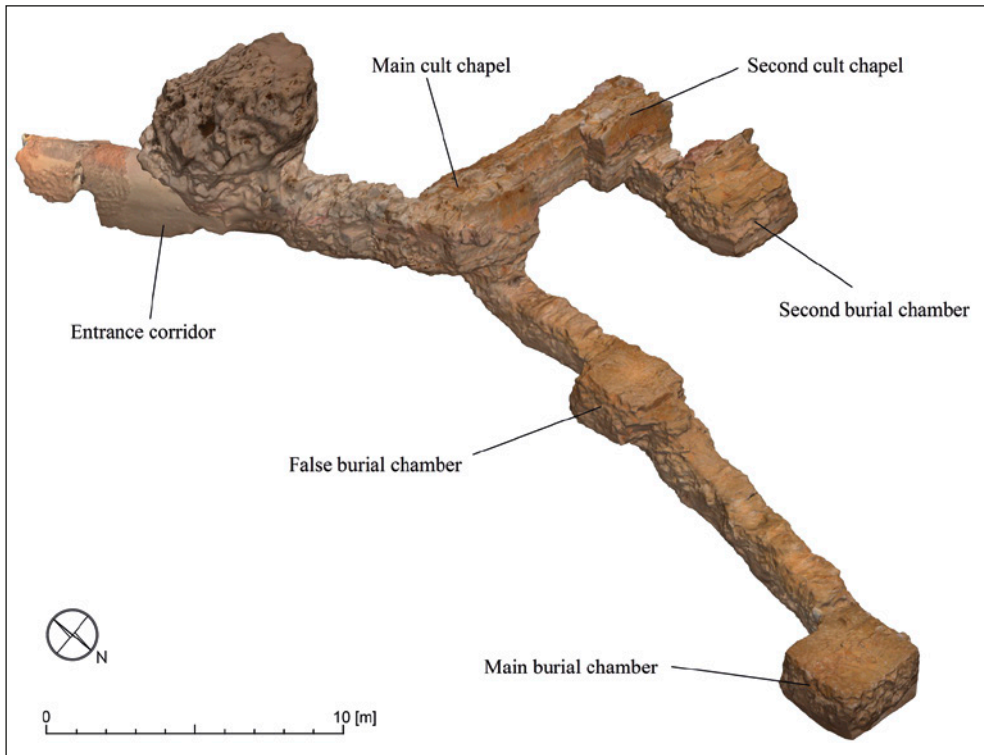


Fig. 8. 3D model of the rock-cut tomb of Horhotep (MMA 513/TT 314)
(Documentation and processing M. Caban)

courtyard. Artifacts related to a burial in the Eighteenth Dynasty [Fig. 5] were found only in the accompanying tomb, which had been cut in the rock at the westernmost limit of the Middle Kingdom courtyard. The tomb, probably cut in the Middle Kingdom, had been reused twice, in the New Kingdom and later in the Third Intermediate Period.

ARCHITECTURAL DOCUMENTATION

Architectural documentation in the course of the season supplied data for the creation of 3D models of two of the studied tombs [Fig. 8]. Using Agisoft PhotoScan software architect Mariusz Caban created digital record of the structures cut in the rock based on a set of detailed photographs. The digital record will now serve as a basis for making the plans and sections of the tomb. Further work is needed on an analysis of the chamber layout of these two tombs.

The work also involved measuring the size of mud bricks used in the enclosure walls of the courtyards and the width and appearance of chisel marks apparent on sandstone slabs.

RECAPITULATION

Architectural documentation of two private rock-cut tombs from the Middle Kingdom was completed as a result of research carried out at the North Asasif necropolis in the 2013/2014 season.

Patryk Chudzik, PhD candidate
Institute of Archaeology, University of Wrocław
50-139 Wrocław, Poland, ul. Szewska 48
pchudzik71@gmail.com

Moreover, finds collected during the field survey and excavations within the tomb complexes yielded data on the use of this particular part of the Theban Necropolis in different periods. The artifacts comprise mostly elements of funerary equipment dated to the Middle Kingdom, Third Intermediate and Late Periods. Archaeological material related to New Kingdom burials was discovered only in an accompanying tomb in complex MMA 514. Of interest is the presence of a votive ear of the god Ptah in the courtyard of tomb MMA 509.

ACKNOWLEDGMENTS

On behalf of the Asasif Project team, I would like to express sincere gratitude to Dr. Zbigniew E. Szafrński, Director of the Polish–Egyptian Archaeological and Conservation Mission of the Temple of Hatshepsut at Deir el-Bahari, for his invaluable help and continuous support. I am also deeply grateful to the staff of the Polish Centre of Mediterranean Archaeology of the University of Warsaw, especially to the Cairo Branch, without whose readiness to help and organizational capabilities our work would hardly have been possible.

The work in the northern part of the Asasif necropolis is conducted under the auspices of PCMA, as a part of the program of the Polish–Egyptian Mission of the Temple of Hatshepsut at Deir el-Bahari.

REFERENCES

- Allen, J. P. (1996). Some Theban officials of the Early Middle Kingdom. In P. Der Manuelian (Ed.), *Studies in honor of William Kelly Simpson I* (pp. 1–26). Boston: Department of Ancient Egyptian, Nubian, and Near Eastern Art, Museum of Fine Arts.
- Allen, J. P. (2003). The high officials of the early Middle Kingdom. In N. Strudwick and J. H. Taylor (Eds.), *The Theban necropolis: Past, present, and future* (pp. 14–29). London: British Museum Press.
- Drobniewicz, B., Ginter, B., and Kozłowski, J. K. (1976). Topographie préhistorique du cirque de Deir el-Bahari. In J. K. Kozłowski (Ed.), *Deir el-Bahari (habitat préhistorique) I* [=Prace archeologiczne 24] (pp. 11–26). Kraków: PWN.
- Hayes, W. C. (1968). *The scepter of Egypt: A background for the study of the Egyptian antiquities in the Metropolitan Museum of Art I. From the earliest times to the end of the Middle Kingdom*. New York: Metropolitan Museum of Art.
- Maspero, G. (1906). *Guide to the Cairo Museum*. (J. E. Quibell and A. A. Quibell, Trans.). Cairo: French Institute of Oriental Archaeology.
- Niwiński, A. (1975). Plateaux d'offrandes et « maisons d'âmes ». Génèse, évolution et fonction dans le culte des morts au temps de la XII^e dynastie. *Et Trav*, 8, 73–112.
- Pischikova, E. (1998). Reliefs from the Tomb of Vizier Nespakashuty: Reconstruction, iconography, and style. *Metropolitan Museum Journal*, 33, 57–101.
- Rochrig, C. H. (2002). *Life along the Nile: Three Egyptians of ancient Thebes*. New York: Metropolitan Museum of Art.
- Rochrig, C. (2003). The Middle Kingdom tomb of Wah at Thebes. In N. Strudwick and J. H. Taylor (Eds.), *The Theban Necropolis: Past, present, and future* (pp. 11–13). London: British Museum Press.
- Sadek, A. I. (1987). *Popular religion in Egypt during the New Kingdom* [=Hildesheimer ägyptologische Beiträge 27]. Hildesheim: Gerstenberg.
- Soliman, R. (2009). *Old and Middle Kingdom Theban tombs*. London: Golden House Publications.
- Winlock, H. E. (1920). The Egyptian Expedition 1918–1920, II. Excavations at Thebes 1919–1920. *Bulletin of the Metropolitan Museum Art*, 15(12), 12–32.
- Winlock, H. E. (1922). Excavations at Thebes. In The Egyptian Expedition, 1921–1922. *Bulletin of the Metropolitan Museum of Art*, 17(2), 19–49.
- Winlock, H.E. (1923). The Museum's excavations at Thebes. In The Egyptian Expedition, 1922–1923. *Bulletin of the Metropolitan Museum of Art*, 24(2), 11–39.
- Winlock, H. E. (1928). The Egyptian Expedition 1925–1927: The Museum's excavations at Thebes. *Bulletin of the Metropolitan Museum Art*, 23(2), 3–58.
- Winlock, H. E. (1940). The mummy of Wah unwrapped. *Bulletin of the Metropolitan Museum Art*, 35, 253–259.
- Winlock, H. E. (1942). *Excavations at Deir el Bahri, 1911–1931*. New York: The Macmillan Company.
- Winlock, H. E. (1945). *The slain soldiers of Neb-hepet-Rē' Mentu-hotpe*. New York: Metropolitan Museum of Art.
- Winlock, H. E. (1947). *The rise and fall of the Middle Kingdom in Thebes*. New York: Macmillan.

CONTENTS

CONTENTS

| | |
|-----------------------|----|
| ACKNOWLEDGMENTS | 10 |
| ABBREVIATIONS..... | 11 |

PAM REPORTS

| | |
|--|----|
| PCMA FIELD MISSIONS AND PROJECTS IN 2012 AND 2013 (WITH MAP) | 17 |
|--|----|

EGYPT

ALEXANDRIA: KOM EL-DIKKA

| | |
|--|----|
| ALEXANDRIA: EXCAVATIONS AND PRESERVATION WORK ON KOM EL-DIKKA, SEASONS 2012 AND 2013 <i>Grzegorz Majcherek</i> | 29 |
| ISLAMIC NECROPOLIS AT KOM EL-DIKKA IN ALEXANDRIA: RESEARCH IN THE 2010–2013 SEASONS <i>Emanuela Kulicka</i> | 62 |
| ISLAMIC GLASS FROM AREA U (2012–2013) <i>Renata Kucharczyk</i> | 73 |

MARINA EL-ALAMEIN

| | |
|--|-----|
| RESEARCH AND CONSERVATION IN MARINA EL-ALAMEIN IN THE 2012 AND 2013 SEASONS. THE POLISH–EGYPTIAN CONSERVATION MISSION <i>Rafał Czerner, Grażyna Bąkowska-Czerner, Wiesław Grzegorek</i> | 87 |
| SELECTED CONSERVATION WORK IN MARINA EL-ALAMEIN IN THE 2012 AND 2013 SEASONS <i>Marlena Koczorowska, Wojciech Osiak</i> | 101 |
| RESEARCH AND CONSERVATION IN THE ROMAN BATHS OF MARINA EL-ALAMEIN IN THE 2012 AND 2013 SEASONS (POLISH–EGYPTIAN CONSERVATION MISSION) <i>Rafał Czerner, Grażyna Bąkowska-Czerner, Grzegorz Majcherek</i> | 113 |

TELL EL-RETABA

| | |
|--|-----|
| TELL EL-RETABA, SEASON 2012 <i>Sławomir Rzepka, Jozef Hudec, Łukasz Jarmużek, Lucia Hulková, Veronika Dubcová</i> | 139 |
| APPENDIX: TELL EL-RETABA 2012. PRELIMINARY REPORT ON ARCHAEOBOTANICAL INVESTIGATIONS <i>Claire Malleson</i> | 156 |
| TELL EL-RETABA 2012: THE POTTERY <i>Anna Wodzińska</i> | 164 |

CONTENTS

TELL EL-FARKHA

TELL EL-FARKHA. EXCAVATIONS, 2012–2013

Marek Chłodnicki, Krzysztof M. Ciałowicz 173

TELL EL-MURRA

TELL EL-MURRA (NORTHEASTERN NILE DELTA SURVEY). SEASONS 2012–2013

Mariusz A. Jucha, Grzegorz Bąk-Pryc, Natalia Małecka-Drozd 199

SAQQARA

SAQQARA: SEASONS 2012 AND 2013/2014

Karol Mysliwiec 215

APPENDIX: CONSERVATION WORK IN SAQQARA (2012 AND 2014)

Zbigniew Godziejewski, Urszula Dąbrowska 224

SAQQARA 2012: THE POTTERY

Teodozja I. Rzeuska 230

WEST THEBES (ASASIF, DEIR EL-BAHARI) AND VALLEY OF THE NILE

THE TOMBS OF ASASIF: ARCHAEOLOGICAL EXPLORATION
IN THE 2013/2014 SEASON

Patryk Chudzik 239

TEXTILES FROM TOMB II IN DEIR EL-BAHARI: PRELIMINARY REPORT
FROM SEASON 2012/2013

Aleksandra Hallmann 247

DEIR EL-BAHARI. TEMPLE OF TUTHMOSIS III, CAMPAIGNS 2012–2013

Monika Dolińska 257

REPORT FROM FIELD RECONNAISSANCE AT GEBELEIN, KHOZAM AND EL-RIZEIQAT

Wojciech Ejsmond, Julia M. Chyla, Cezary Baka 265

DAKHLEH OASIS

DAKHLEH OASIS PROJECT, PETROGLYPH UNIT: SEASONS 2012 AND 2013

Ewa Kuciewicz, Paweł Polkowski, Michał Kobusiewicz 275

BERENIKE

BERENIKE PROJECT. HELLENISTIC FORT, ROMAN HARBOR, LATE ROMAN TEMPLE, AND
OTHER FIELDWORK: ARCHAEOLOGICAL WORK IN THE 2012 AND 2013 SEASONS

Steven E. Sidebotham, Iwona Zych, Joanna K. Rądkowska, Marek Woźniak 297

SUDAN

DONGOLA

DONGOLA. SEASONS IN 2012–2013

Włodzimierz Godlewski 325

APPENDIX: THE SKELETAL REMAINS FROM THE SANCTUARY OF ANNA
IN THE MONASTERY ON KOM H

Robert Mahler 340

CONTENTS

| | |
|---|-----|
| WALL INSCRIPTIONS IN THE SOUTHWEST ANNEX TO THE MONASTERY ON KOM H AT DONGOLA: REPORT ON WORK IN THE 2013 SEASON <i>Adam Łajtar</i> | 344 |
| CRYPT 3 IN THE NORTHWEST ANNEX OF THE MONASTERY ON KOM H IN DONGOLA: REPORT ON THE EXPLORATION IN 2012 <i>Robert Mahler, Włodzimierz Godlewski, Katarzyna Danys-Lasek, Barbara Czaja</i> | 352 |
| BANGANARTI AND SELIB | |
| BANGANARTI AND SELIB IN 2011/2012 AND 2013 <i>Bogdan Żurawski</i> | 369 |
| EXCAVATIONS AT SELIB 2 IN 2012 <i>Roksana Hajduga, Katarzyna Solarska</i> | 389 |
| SELIB 1. PRELIMINARY REPORT FOR THE 2012 AND 2013 SEASONS <i>Aneta Cedro</i> | 397 |
| FAUNAL REMAINS FROM THE FORTIFIED SETTLEMENT AROUND THE CHURCH AT BANGANARTI IN SUDAN <i>Marta Osypińska</i> | 411 |
| EARLY MAKURIA (MTOM) PROJECT | |
| ANIMAL REMAINS FROM THE EARLY MAKURIAN CEMETERY IN EL-ZUMA (SEASON 2013) <i>Urszula Iwaszczuk</i> | 425 |
| GHAZALI | |
| GHAZALI 2012: PRELIMINARY REPORT <i>Artur Obłuski, Grzegorz Ochala, Miron Bogacki, Wiesław Małkowski, Szymon Maślak, Zaki ed-Din Mahmoud</i> | 431 |
| CYPRUS | |
| NEA PAPHOS | |
| NEA PAPHOS. SEASONS 2012 AND 2013 <i>Henryk Meyza</i> | 443 |
| LEBANON | |
| JIYEH | |
| PRELIMINARY REPORT ON THE 2012 AND 2013 EXCAVATION SEASONS AT JIYEH (PORPHYREON): WORK IN SECTOR D (RESIDENTIAL QUARTER) <i>Tomasz Waliszewski, Magdalena Antos, Piotr Jaworski, Piotr Makowski, Marcin Romaniuk, Rafał Solecki, Agnieszka Szymczak</i> | 453 |
| PRELIMINARY RESULTS OF A STRATIGRAPHIC ANALYSIS OF LATE ROMAN AND EARLY BYZANTINE ARCHITECTURE IN THE RESIDENTIAL QUARTER OF JIYEH <i>Michał Dzik</i> | 475 |

CONTENTS

| | |
|---|-----|
| RESULTS OF A SURVEY CONDUCTED IN THE AREA OF THE JIYEH MARINA RESORT HOTEL COMPLEX IN THE 2012 SEASON <i>Zofia Kowarska, Szymon Lenarczyk</i> | 491 |
|---|-----|

KUWAIT

AL-SUBIYAH AND FAILAKA ISLAND

| | |
|--|-----|
| TUMULUS BURIAL FIELD ON THE NORTH COAST OF KUWAIT BAY. PRELIMINARY EXCAVATION REPORT ON THE SPRING SEASON IN 2012 <i>Łukasz Rutkowski</i> | 505 |
| CHRISTIAN SETTLEMENT AT FAILAKA, QUSUR SITE (KUWAIT): EXCAVATIONS IN 2011 AND 2013 <i>Magdalena Żurek</i> | 529 |
| PRELIMINARY REPORT ON THE ARCHAEOLOGICAL SURVEY OF THE JOINT KUWAITI–POLISH MISSION, FAILAKA ISLAND, 2012 <i>Franciszek Pawlicki</i> | 547 |
| FAILAKA ARCHAEOLOGICAL RESEARCH PROJECT. PRELIMINARY RESULTS AFTER THE FIRST SEASON OF EXCAVATION AT THE KHARAIB EL-DESHT SITE IN 2013 <i>Agnieszka Pieńkowska</i> | 560 |
| APPENDIX 1: KHARAIB EL-DESHT 2013: POTTERY. PRELIMINARY REPORT <i>Marta Mierzejewska</i> | 571 |
| APPENDIX 2: SURVEY OF KHARAIB EL-DESHT BAY ON FAILAKA ISLAND: PRELIMINARY REPORT <i>Magdalena Nowakowska</i> | 579 |

IRAQI KURDISTAN

| | |
|--|-----|
| NEWCOMERS AND AUTOCHTHONES. PRELIMINARY REPORT ON 2013 ACTIVITIES IN THE KURDISTAN AUTONOMOUS REGION, IRAQ <i>Dorota Ławecka</i> | 591 |
|--|-----|

PAM STUDIES

| | |
|--|-----|
| LEVALLOIS TRADITION EPIGONES IN THE MIDDLE NILE VALLEY: SURVEY IN THE AFFAD BASIN <i>Marta Osypińska, Piotr Osypiński</i> | 601 |
| ZOOMORPHIC CLAY FIGURINES FROM TELL ARBID. PRELIMINARY REPORT <i>Maciej Makowski</i> | 627 |
| PLANT MACROFOSSILS FROM THE SITE OF TELL ARBID, NORTHEAST SYRIA (3RD–2ND MILLENNIUM BC). PRELIMINARY REPORT <i>Aldona Mueller-Bieniek, Krystyna Wasylkowa, Anna Smogorzewska</i> | 657 |
| THE ANIMAL ECONOMY OF PEOPLE LIVING IN THE SETTLEMENT OF TELL RAD SHAQRAH (SYRIA) <i>Joanna Piątkowska-Matecka, Rafał Koliński</i> | 675 |

CONTENTS

| | |
|---|-----|
| THE SOLAR ALTAR IN THE TEMPLE OF HATSHEPSUT AT DEIR EL-BAHARI: ARCHITECTURE AND IDEOLOGY <i>Andrzej Ćwiek</i> | 693 |
| FAIENCE OBJECTS FROM THE TOMB MMA 1152 AT SHEIKH ABD EL-GURNA <i>Patryk Chudzik, Andrzej Ćwiek</i> | 701 |
| INDIAN STEEL: A FORGOTTEN COMMODITY OF THE GREAT TRADE ROUTES <i>Marek Woźniak</i> | 709 |
| MONETIZATION OF ROMAN EGYPT DURING THE FLAVIAN DYNASTY (AD 69–96): THE CASE OF ALEXANDRIA AND BERENIKE <i>Katarzyna Lach</i> | 727 |
| CROSS-CULTURAL BEAD ENCOUNTERS AT THE RED SEA PORT SITE OF BERENIKE, EGYPT. PRELIMINARY ASSESSMENT (SEASONS 2009–2012) <i>Joanna Then-Obluska</i> | 735 |
| A NEW LOOK ON SOME OLD GLASS FINDS FROM PALMYRA <i>Krystyna Gawlikowska</i> | 779 |
| NEW INSIGHTS INTO NUBIAN ARCHERY <i>Łukasz Zieliński</i> | 791 |
| INDEX OF SITES | 803 |
| GUIDELINES FOR AUTHORS | 804 |
| PCMA PUBLICATIONS | 805 |

POLISH ARCHAEOLOGY IN THE MEDITERRANEAN (PAM)
Annual of the Polish Centre of Mediterranean Archaeology, University of Warsaw

PAM Editor-in-chief: Iwona Zych

Volume 24/1: Research

All texts peer-reviewed.

<http://www.pcma.uw.edu.pl/en/pam-journal/pam-independent-reviewers/>

Press-reviewing process: Urszula Wicenciak

Bibliographic editor: Aleksandra Zych

Language consultation: Iwona Zych

Technical editor: Iwona Zych

Digital processing: Ewa Czyżewska-Zalewska

Image processing and copyediting assistance: Ewa Czyżewska-Zalewska, Szymon Maślak, Marta Momot, Marek Puzkarski, Urszula Wicenciak

Original graphic design: Jerzy Kowalski, updated by Ewa Czyżewska-Zalewska for PCMA

DTP: Ewa Czyżewska-Zalewska, assisted by Agnieszka Dzwonek

Cover: Tumulus SB 100 from the Al-Subiyah region of Kuwait during exploration
(Photo M. Makowski)

ISSN 1234–5415 (Print), ISSN 2083–537X (Online)

© Polish Centre of Mediterranean Archaeology, University of Warsaw, Warszawa 2015

© Wydawnictwa Uniwersytetu Warszawskiego, Warszawa 2015

All rights reserved. No part of this publication may be reproduced or transmitted in any form or by any means, electronic or mechanical, including photocopying, recording, or any information storage and retrieval system, without permission in writing from the Polish Centre of Mediterranean Archaeology of the University of Warsaw.

Polish Centre of Mediterranean Archaeology, University of Warsaw

00-497 Warszawa, Poland, ul. Nowy Świat 4

e-mail: pam.pcma@uw.edu.pl

www.pcma.uw.edu.pl

Orders can be placed c/o Agnieszka Pieńkowska

a.pienkowska@uw.edu.pl

University of Warsaw Press

00-497 Warszawa, Poland, ul. Nowy Świat 4

www.wuw.pl; e-mail: wuw@uw.edu.pl

Internet Bookshop: www.wuw.pl/ksiegarnia

Printed in Poland

POLISH ARCHAEOLOGY IN THE MEDITERRANEAN

Published annually since 1990



PAM XXIV/1 *Research*

REPORTS

Fieldwork projects carried out by PCMA teams in the Ancient Near East and Africa

- scope: archaeological, geophysical, restoration and study work
- areas of interest: Egypt, Sudan, Cyprus, Syria, Lebanon, Kuwait, Iraq
- timespan: ten millennia from prehistory and protohistory through the medieval period

STUDIES

- archaeological, architectural and material research within the fields of study covered by PCMA fieldwork

PAM XXIV/2 *Special Studies*

Deir el-Bahari Studies

Editor Zbigniew E. Szafrński

Volume dedicated to research on specific egyptological and archaeological themes resulting from the ongoing work of the Polish conservation and restoration project in the Temple of Queen Hatshepsut in Deir el-Bahari (West Thebes, Luxor, Egypt). The 11 contributions included in this book concern mostly a later phase in the occupation of the complex, in the Third Intermediate Period (11th–8th century BC), when the abandoned temple was reused as a burial ground. A few of the articles refer to the original architectural form and decoration of the temple from the times of Hatshepsut (15th century BC). Also included is an article on tombs of three other queens of the Eighteenth Dynasty in the Valley of the Kings.

Available as full texts on-line at www.pcma.uw.edu.pl

PAM volumes 17 to the present available on-line from www.ceeol.com

Information and orders:

www.pcma.uw.edu.pl

pcma@uw.edu.pl

pam.pcma@uw.edu.pl

www.wuw.pl/ksiegarnia

RESEARCH

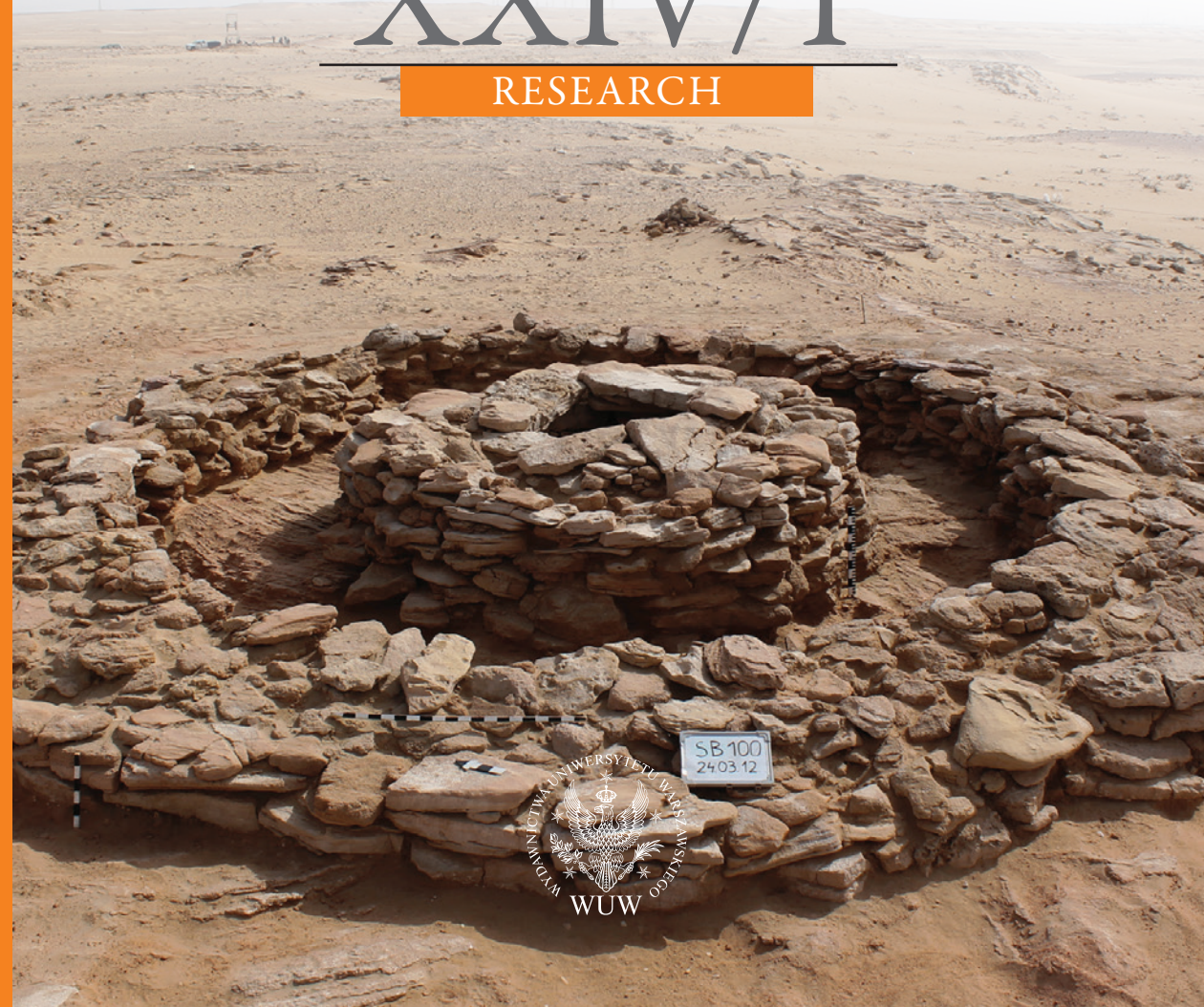
PAM XXIV/1

POLISH CENTRE OF MEDITERRANEAN ARCHAEOLOGY
UNIVERSITY OF WARSAW

POLISH ARCHAEOLOGY IN THE MEDITERRANEAN

XXIV/1

RESEARCH



UNIVERSITY
OF WARSAW

Polish Centre of
Mediterranean Archaeology

