

Title: **Marea. Report 2009**

Author(s): Hanna Szymańska , Krzysztof Babraj

Journal: *Polish Archaeology in the Mediterranean* 21 (Research 2009)

Year: 2012

Pages: 59-71

ISSN 1234-5415 (Print), ISSN 2083-537X (Online)

ISBN 978-83-235-1144-1

Publishers: Polish Centre of Mediterranean Archaeology, University of Warsaw (PCMA UW),  
Wydawnictwa Uniwersytetu Warszawskiego (WUW)

[www.pcma.uw.edu.pl](http://www.pcma.uw.edu.pl) – [www.wuw.pl](http://www.wuw.pl)

---

## MAREA REPORT 2009

Hanna Szymańska,<sup>1</sup> Krzysztof Babraj<sup>2</sup>

<sup>1</sup> Institute of Ancient and Oriental Cultures, Polish Academy of Sciences

<sup>2</sup> Archaeological Museum in Kraków

**Abstract:** Two areas of the Byzantine basilica in Marea were investigated as part of the ongoing archaeological project. In the eastern part of the nave and aisles an intriguing water installation was discovered and an entrance in the south wall was investigated. More units identified as shops were found lining the southern side of a courtyard in front of the main western entrance to the church. One of the rooms yielded a coin weight of copper alloy, another a rare glass handle attachment in the shape of a comic actor's mask. A cellar found in this area produced many small jugs used for distributing wine in small quantities.

**Keywords:** Marea, Byzantine basilica, shops, water well, coin weight, glass mask

# MAREA REPORT 2009

Hanna Szymańska,<sup>1</sup> Krzysztof Babraj<sup>2</sup>

<sup>1</sup> Institute of Ancient and Oriental Cultures, Polish Academy of Sciences

<sup>2</sup> Archaeological Museum in Kraków

**Abstract:** Two areas of the Byzantine basilica in Marea were investigated as part of the ongoing archaeological project. In the eastern part of the nave and aisles an intriguing water installation was discovered and an entrance in the south wall was investigated. More units identified as shops were found lining the southern side of a courtyard in front of the main western entrance to the church. One of the rooms yielded a coin weight of copper alloy, another a rare glass handle attachment in the shape of a comic actor's mask. A cellar found in this area produced many small jugs used for distributing wine in small quantities.

**Keywords:** Marea, Byzantine basilica, shops, water well, coin weight, glass mask

The tenth excavation season of the Polish Archaeological Mission at Marea contributed significant data on the functioning of the basilical church. Two areas were investigated: the central part of the *quadratum populi* (nave and aisles) and units adjoining the southwestern corner of the church [Fig. 1].

## NAVE

The nave (unit 13) was originally paved with large marble flagstones, the negatives of which can be traced in the extant mortar bedding. One of the slabs, found out of its original context, was almost intact. A *prostoon* or processional way, 1.80 m wide, ran from the pulpit — which was accessible through the central passage in the altar screen and the remains of which were discovered last season — presumably

to the western gate [Fig. 4]. Near the western end of the pulpit, on the northern and southern sides, there were clear traces of narrow passageways, which ended at the colonnades separating the aisles from the nave [see Fig. 4]. Their course was marked by remains of gray cement, which served as bedding for a now-lost pavement in *opus sectile*, which had presumably been laid on a stabilizing layer made of cut amphora fragments, like the pavement in front of the pulpit and in unit 20 (Szymańska, Babraj 2011: 88 and Fig. 8).

The uncovered center section of the northern aisle (2) was also paved with flagstones, impressions of these being preserved in the mortar bedding wherever the pavement was not preserved. The slabs are much narrower than in the nave. The wall separating the aisle from the north side

chapel (discovered in 2004, see Szymańska, Babraj 2005: 47–48, Figs 4, 5) had five evenly spaced projections, which may have also played the role of buttresses [Fig. 2]. Abutting the eastern part of this wall on the south (and east of the presumed buttresses) was a bench built of large, neatly dressed stone blocks covered with a thick layer of plaster.

A rectangular structure, 4.50 x 2.50 m in plan and 1.50 m high, stood in place of the fifth column in the row that separated the north aisle from the nave; the spot matched the position of the entrance to the north side chapel and was near to the northern transept. It was built of masonry blocks similar in size to the stones used for the walls of the basilica. The structure is certainly later than the original church

building, as it was founded on the stylobate of the colonnade, from which the column had been removed. A well was found to the east of this structure. At present, pending thorough study and search for parallels, it can be surmised that the structure was used to draw water. The well itself, built of stone blocks, was 5.60 m deep and had a small squarish opening. Small footholds were cut in the south and north walls, thirteen on each side and located at different heights [Fig. 3]. The channel conducting water, most probably groundwater, ran eastward along the stylobate; it was constructed of skillfully dressed stone blocks. At the bottom of the well there was a small cistern. Its fill contained numerous amphora sherds.

An Attic column base of marble, found in the nave, was most probably once part of

#### Team

*Dates of work:* 1 July–10 August 2009

*Directors:* Dr. Hanna Szymańska, archaeologist (Research Center for Mediterranean Archaeology, Polish Academy of Sciences)

*Deputy director:* Krzysztof Babraj, archaeologist (Archaeological Museum in Kraków)

*SCA representative:* Salwa Sayed Aly

*Archaeologist:* Anna Drzymuchowska (Archaeological Museum in Kraków)

*Architect:* Daria Tarara (freelance)

*Geodesic supervision:* Dr. Janusz Kogut (University of Technology in Kraków)

*Restorers:* Joanna Babraj, Tomasz Skrzypiec (both Academy of Fine Arts in Kraków)

*Photographer:* Piotr Suszek (freelance)

#### Acknowledgments

Work at Marea is carried out on the strength of an agreement between the Archaeological Museum in Kraków and the Polish Centre of Mediterranean Archaeology, University of Warsaw, with private funding coming also from Mrs. Héléne Zaleski.

We would like to express our appreciation to Dr. Zahi Hawass, Secretary General of Egypt's Supreme Council of Antiquities, and Mr. Magdy El-Ghandour, General Director of Foreign and Egyptian Mission Affairs and Permanent Committee, for their interest in our project and cooperation. The Project gratefully acknowledges the assistance of Mr. Alaa Shehata, General Director of the Alexandrian Antiquities Department, and the friendly cooperation of Ms Emily Nessim, General Director of Foreign Excavations in Alexandria.

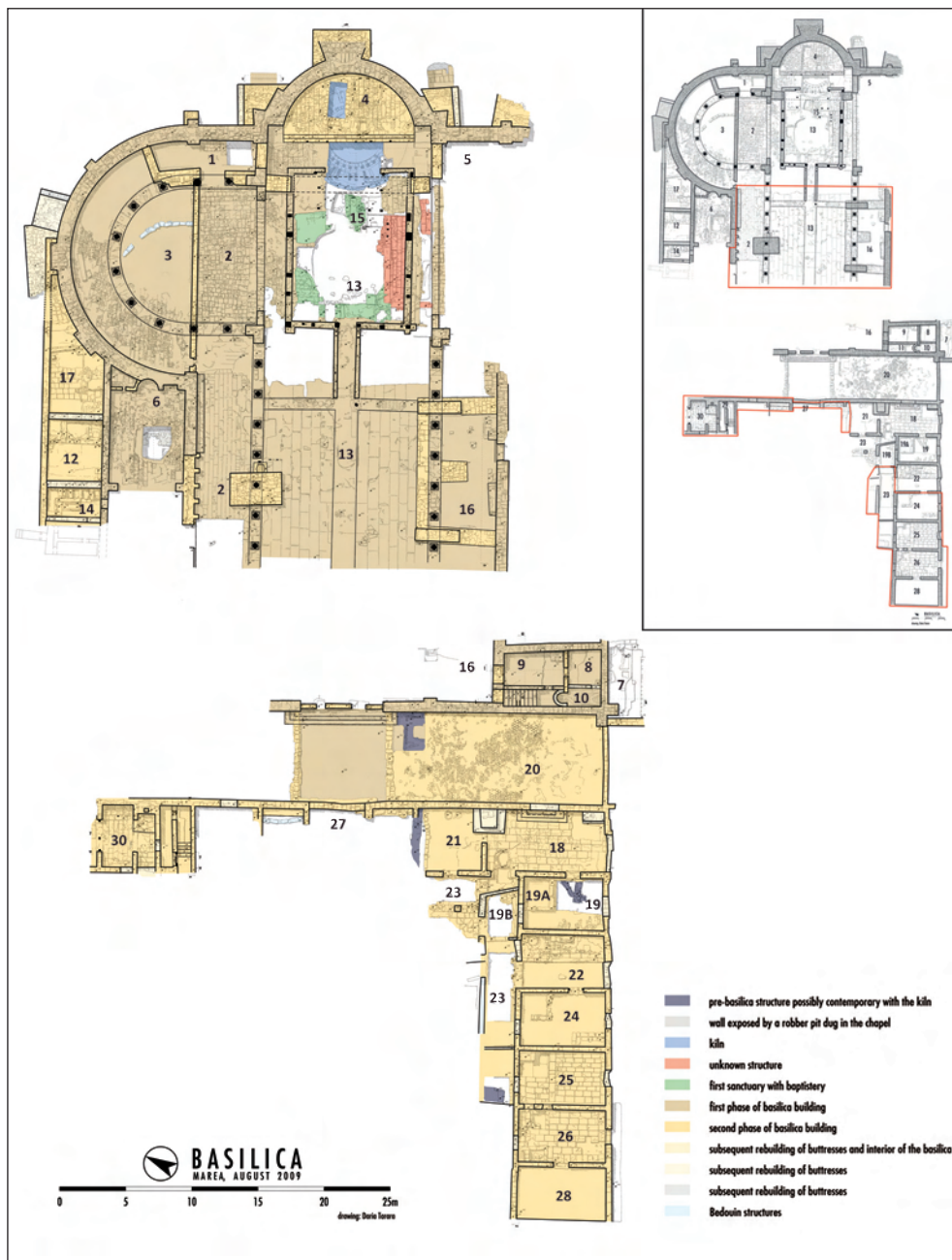
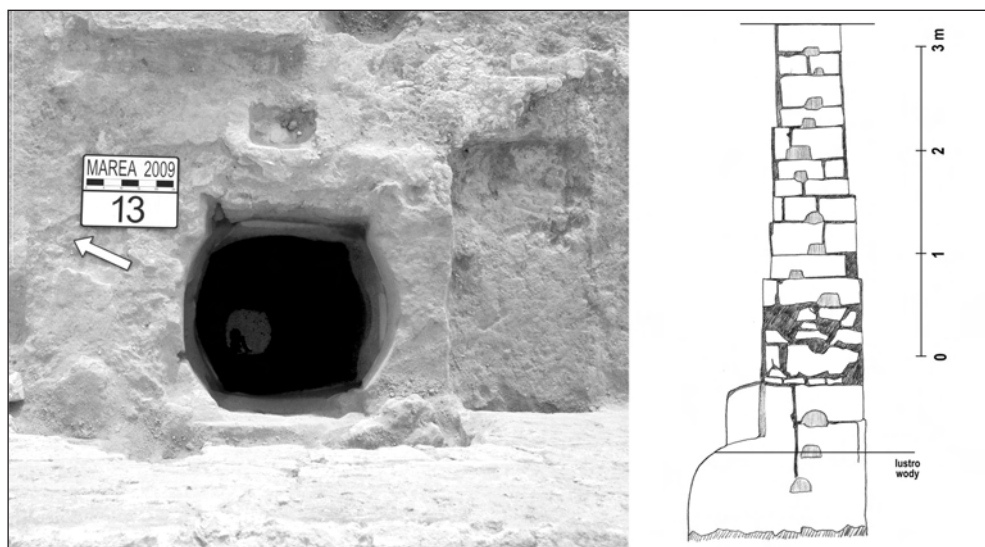


Fig. 1. Plan of the uncovered part of the basilica; inset, trenches excavated in 2009 marked in red (Drawing D. Tarara)



*Fig. 2. North wall of the north aisle with presumed buttresses  
(Photo P. Suszek)*



*Fig. 3. Top view of well head close to the water installation and section through the well and cistern below it (Photo K. Babraj; drawing T. Skrzypiec)*



the colonnade separating the nave from the north aisle. The base, which had originally been part of a different structure, was placed on one of the imposts laid on the stylobate.

In the eastern part of the uncovered section of the north aisle there was a vessel (*quadus*) anchored in the pavement with fragments of reused limestone slabs. A similar artifact was found last season in the sanctuary.

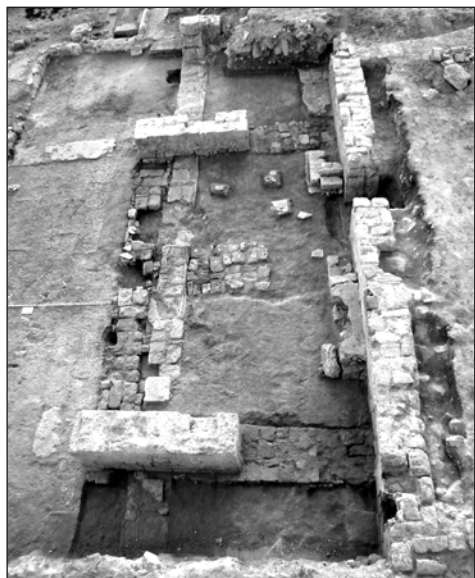
Excavations in the south aisle of the basilica uncovered two structures set 8.50 m apart. Both were free-standing, built of stone blocks, measuring 3.00 m by 1.00 m and 1.00 m high [Fig. 5]. They

presumably separated the nave from the south aisle and set off a space facing a side entrance opening to the south. They were erected, as was the pedestal in the other aisle, between columns of the southern colonnade, which indicates that they were constructed at a later date. The space between these structures (2.00 m by 2.80 m) was paved with very large limestone flagstones. Another well-made pavement of limestone slabs was recorded in a test under this floor at a depth of 1.20 m. It suggests that there was either earlier occupation of the basilica or a different building underlying the church in this location.



Fig. 4. Sanctuary of the basilica with ambo and proston, looking east; note apparent water installation in the north aisle (Photo T. Skrzypiec)

A well-preserved side entrance with two doorjambs was found in the south wall of the basilica [Fig. 6]. It appears



to have remained in use until the end of the occupation of the church. A bench abutted this entrance on the west side; its side was painted with two successive coats of vivid red. To the west of the entrance, about 3 m away from it, there was a small recess in the wall, presumably for a stoup in the form of a marble basin, a fragment of which was found nearby.

Various elements of marble architectural decor were found in the part of the *quadratum populi* (nave and aisles) uncovered this season. These elements included column fragments (pieces of capitals, shafts, bases), painted moldings that once constituted wall decoration, as well as limestone structural elements, such as thresholds, a statue console, etc.

Fig. 5. Two stone structures flanking entrance through south doorway, seen to the east (Photo T. Skrzypiec)



Fig. 6. Southern entrance to the basilica, looking south (Photo K. Babraj)

(on the architectural decoration from the basilica in Marea, see Szymańska, Babraj 2010), as well as small fragments of a mosaic made of glass cubes from the cupola. A trial reconstruction of at least some elements of the church interior will be attempted on these grounds.

#### AREA IN FRONT OF THE BASILICA

A test trench, 2.20 m square, was excavated in the northeastern corner of unit 20, immediately west of the steps leading to the main basilica entrance from the west. The unit, which seems to have been a roofed courtyard in front of the church, was discovered last season. A row of amphorae, twelve of which were unearthed, ran west

from the wall of the building, presumably continuing under the floor of unit 20 [Fig. 7]. The vessels were buried mouth down, their bodies cut off to an even level. Amphorae of this type were common from the 1st to the 4th century (see Caravale, Toffoletti 1997: 156; Gempeler 1992: Pl. 120, Form K 700, 188). Further studies are needed to interpret this structure. Significantly, the date of these vessels matches finds from the amphora kiln, on which the apse and presbytery of the basilica were founded (for the date of the vessels, G. Majcherek, personal communication; see also Szymańska, Babraj 2004: 62). Altitude measurements have confirmed that the lined-up amphorae and the kilns were on the same level.



Fig. 7. Space sectioned off by amphorae of 2nd–3rd century date with cut necks, found in the layer under the floor of the roofed courtyard (no. 20), looking south (Photo J. Babraj)



### SHOPS NORTHWEST OF THE BASILICA

Another five units were excavated by the southwestern corner of the basilica (loci 23, 24, 25, 26 and 28) [Fig. 8], extending the row of rooms explored already in previous seasons (2005, 2007 and 2008) and contributing data to the ongoing research on the economy of Byzantine churches. Units 25 and 26 may have served as a kind of exchange office, where pilgrims on their way to Abu Mina could change their money (see Szymańska, Babraj 2005: 52). Excavation of these rooms yielded over 300 coins, most of which were too corroded for conservation, but their presence alone

pointed to the economic function of these rooms. A coin weight was also discovered in unit 26 (for a similar specimen [six *nomismata*] dated to the 4th–6th century, see Wamser, Zahlhaas [eds] 1998: 161, 163, Cat. 197; see also Wamser [ed.] 2004: 360–367) [Fig. 9, top right]. Both rooms were neatly paved with limestone slabs of roughly equal size.

These five rooms, which were most probably shops, yielded the largest number of small finds, including a plethora of objects of daily use. These included bone plaques for adornment of wooden boxes, some of them skillfully carved, like a fragment of a plaque depicting

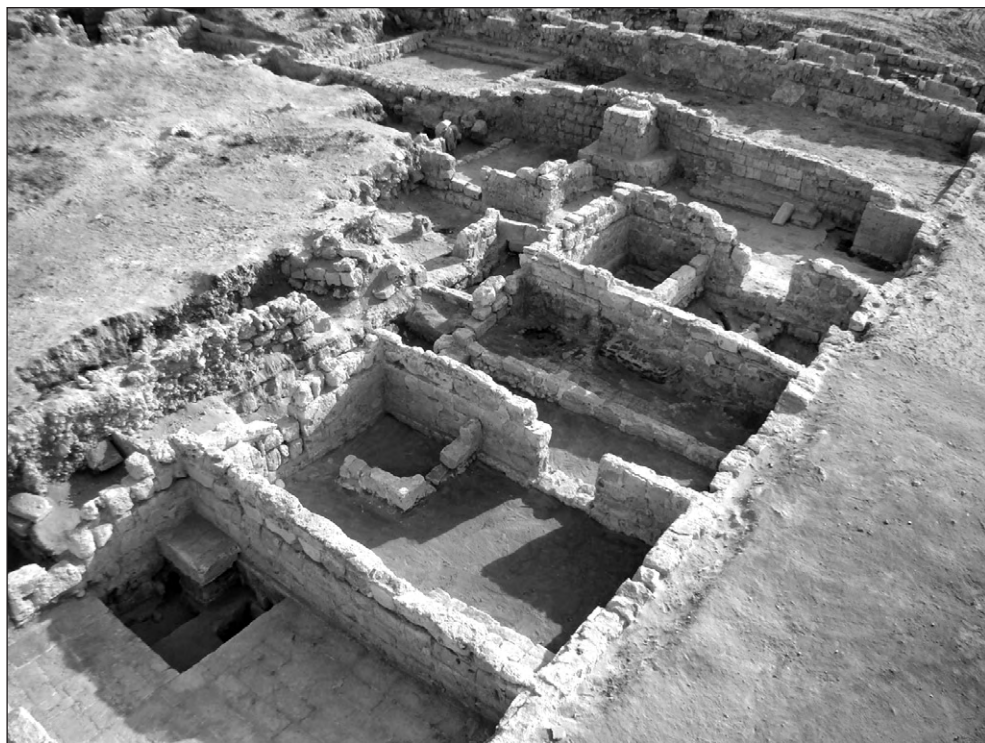


Fig. 8. Shops explored behind the southwestern corner of the basilica, looking southwest  
(Photo T. Skrzypiec)

a dancing Maenad [Fig. 9, top left]. Other finds included bone and bronze hair pins, two linked bronze plates that were once part of a decorated bracelet, hanger hooks, fishing hooks, game pieces, half of a stone mold with a depiction of a gazelle, etc. Above all, however, the exploration of these rooms brought to light large amounts of earthenware vessels, some of

which were preserved intact. They were mostly amphorae, tableware, bowls, jugs, etc., as well as two amphora stoppers. Some of the sherds bore Greek inscriptions, most probably indicating measures.

Coptic pottery with painted decoration constituted a noteworthy group of finds. Vessels were adorned with floral and faunal motifs, as well as human



Fig. 9. Finds from units identified as shops in front of the western basilica entrance: (clockwise from top right) coin weight; glass jug handle attachment in the shape of a comic actor's mask, fragmentary bone plaque with image of a dancing Maenad (Photo K. Babraj [top right], P. Suszek)

figures, usually male busts typical of this repertoire. Other finds included several fragments of terracotta figurines with partly preserved polychromy, as well as a whistle in the shape of a rooster. There were also numerous oil lamps, all of them products of the workshops in Abu Mina (Szymańska 2008). An ampulla of St Menas was found in unit 23. Fragments of glass perfume bottles, some of them gilded, and *polycandelon* lamps were just as numerous as in previous seasons (Kucharczyk 2008; Szymańska, Babraj 2005: 53).

The finds and interior furnishings from unit 24 suggested that it was a kind of tavern(?). A small closed-off space in the northeastern corner may have been used for meal preparation. Finds included 145 shells of edible clams and snails, and a considerable amount of pottery, tableware and kitchenware. The most interesting find was a glass theatre mask applied as a decorative element to the handle of a glass vessel [Fig. 9, bottom right].<sup>1</sup>

#### UNITS NORTHWEST

##### OF THE BASILICA ENTRANCE

Exploration to the northwest of the main entrance to the basilica concentrated foremost on an air vent, which could be seen in the top of a wall that extended the partition wall between the courtyard (unit 18) and reception hall (unit 20) located to the south of the church entrance. A bread oven built of two stones was discovered in the upper layers

(on the spot of unit 30), 0.67 m below the top of the wall; the air vent was located immediately above this oven. Sherds of 7th–8th century amphorae were found inside this oven.

More confirmation of the economic functioning of the basilica came from the exploration of two adjoining rooms and cellar below them [Fig. 11]. The southern of the two units, 29, contained a staircase, entered from the west. The space under the stairs was open and was reached from unit 30 through a doorway with preserved hinges. There was a dirt floor in this unit.

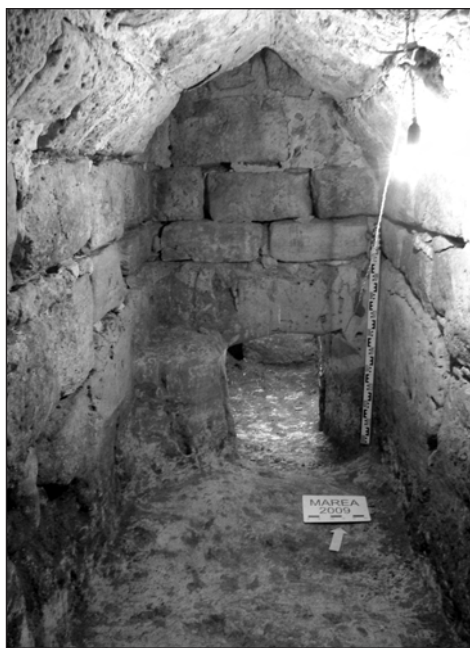


Fig. 10. Cellar under unit 30, looking south  
(Photo T. Skrzypiec)

<sup>1</sup> Similar decoration of glass vessel handles is dated to the 1st–2nd century, see, e.g., von Saldern *et alii* 1974: 194, Cat. 231. Theatre masks adorning vessels from Egypt have also been dated to the 4th century, see Israeli 2003: 190, Cat. 224. A different-style mask found in Thessaloniki, out of archaeological context, has been dated to the 4th–5th century, see Antonaras 2009: 332–335, Pl. 45, XXIV 753.



Four stone steps have been preserved and there are traces of the mounting of more on the walls of the unit.

Unit 30, located immediately to the north of unit 29 [see *Fig. 11*], was paved with limestone slabs. It was paved throughout and had a large recess in the southern part, communicating with the space under the staircase. The entrance, a double gate in the broad side of the unit, opened to the north, onto the courtyard facing the lake. Three square openings cut in the threshold held the hinges and the bolt of the lock. Installations for tying down donkeys, familiar from the practices

of modern day local Bedouin, were cut in two stone blocks.

A hole in the pavement of the back part of unit 30, immediately beneath the air vent mentioned above, led to a cellar. It appears to have been a robber's hole. The cellar consisted of two vaulted units, which had been hewn in bedrock in the lower part and raised of large stone blocks in the upper part [*Fig. 10*], interconnected by a small passageway, 0.50 m in height, hewn in the rock. Inside there were over one hundred small wine jugs (see Drzymuchowska 2012, in this volume) [*Fig. 12*]<sup>2</sup> and some oil lamps, as well as, significantly, a large



*Fig. 11. Units 29 and 30, looking east  
(Photo T. Skrzypiec)*

<sup>2</sup> Similar jugs have been interpreted as water containers (Kaminski-Menssen 1996: 263–265, Pls 112–118), but their number and storage in a cool cellar points to wine as a product requiring specific storage conditions.



number of coins concentrated in one place (a hoard?). The implication is that the goods stored in the cellar were sold and in that case it would be wine rather than water.

The cellar was accessed from the lakeside by a flight of rock-cut steps and

a now blocked doorway. It can be said therefore to be yet another room for commercial purposes adjacent to the basilica, which, along with shops, exchange offices and taverns (?) catered to the needs of pilgrims who stopped there on the way to Abu Mina.



*Fig. 12. Jugs found in the cellar under unit 30*  
(Photo J. Babraj)

Krzysztof Babraj  
Archaeological Museum in Kraków  
31-002 Kraków, Poland  
ul. Senacka 3  
Krzysztof.Babraj@ma.krakow.pl

## REFERENCES

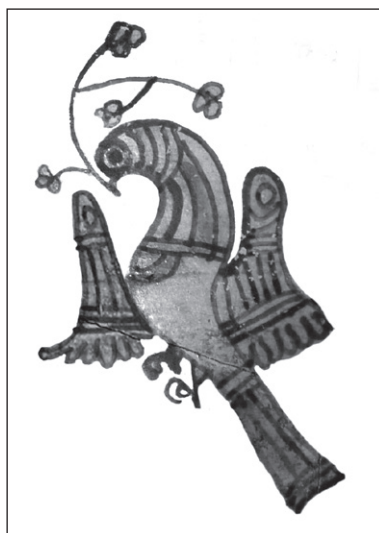
- Antonaras, A.C.  
 2009 *Rōmaïke kai Palaiochristianike yalourgía. 1os ai. p.CH.-6os ai. m.CH. Paragōge kai proiōnta. Ta angeía apó tē Thessaloníkē kai tēn perioche tēs*, Athens: Ekdóseis I. Sidérēs
- Caravale, A., Toffoletti, I.  
 1997 *Anfore antiche. Conoscerle e identificarle*, Formello: IRECO
- Gempeler, R.D.  
 1992 *Elephantine X. Die Keramik römischer bis früharabischer Zeit [=AV 43]*, Mainz am Rhein: Philipp von Zabern
- Israeli, Y.  
 2003 *Ancient Glass in the Israel Museum. The Eliahu Dobkin Collection and Other Gifts*, Jerusalem: Israel Museum
- Kaminski-Menssen, G.  
 1996 *Bildwerke der Sammlung Kaufmann III. Bildwerke aus Ton, Bein und Metall*, Kassel: Gutenberg
- Kucharczyk, R.  
 2008 Glass finds from the baths and *sāqiyah* [in:] H. Szymańska, K. Babraj (eds), *Marea I. Byzantine Marea. Excavations in 2000–2003 and 2006 [=Biblioteka Muzeum Archeologicznego w Krakowie 4]*, Kraków: Muzeum Archeologiczne, 129–143
- (von) Saldern, A., Nolte, B., La Baume, P., Haevernick, T.E.  
 1974 *Gläser der Antike. Sammlung Erwin Oppenländer*, Hamburg: Museum für Kunst und Gewerbe
- Szymańska, H.  
 2008 Pottery lamps from baths, *sāqiya* and funerary chapel [in:] H. Szymańska, K. Babraj (eds), *Marea I. Byzantine Marea. Excavations in 2000–2003 and 2006 [=Biblioteka Muzeum Archeologicznego w Krakowie 4]*, Kraków: Muzeum Archeologiczne, 161–168
- Szymańska, H., Babraj, K.  
 2004 Marea. Fourth season of excavations, *PAM 15 (Reports 2003)*, 53–62  
 2005 Marea. Excavations 2004, *PAM 16 (Reports 2004)*, 43–54  
 2007 Marea. Sixth season of excavations, *PAM 17 (Reports 2005)*, 55–66  
 2010 Architectural decor of the Basilica in Marea (Egypt). Preliminary report [in:] J. Kościuk (ed.), *Non solum villae. Księga jubileuszowa ofiarowana profesorowi Stanisławowi Medekszy*, Wrocław: Oficyna Wydawnicza Politechniki Wrocławskiej, 302–315  
 2011 Marea. Excavations 2008, *PAM 20 (Research 2008)*, 81–96
- Wamser, L. (ed.)  
 2004 *Die Welt von Byzanz — Europas östliches Erbe. Glanz, Krisen und Fortleben einer tausendjährigen Kultur* [exhibition catalogue], Stuttgart: Theiss
- Wamser, L., Zahlhaas, G. (eds)  
 1998 *Rom und Byzanz. Archäologische Kostbarkeiten aus Bayern* [exhibition catalogue], Munich: Hirmer

POLISH CENTRE OF MEDITERRANEAN ARCHAEOLOGY  
UNIVERSITY OF WARSAW

# POLISH ARCHAEOLOGY IN THE MEDITERRANEAN

## XXI

RESEARCH 2009



---

## CONTENTS

---

## CONTENTS

ACKNOWLEDGMENTS .....	11
OBITUARIES	
<i>Aleksandra Krzyżanowska</i> .....	13
ABBREVIATIONS AND STANDARD REFERENCES .....	15

## PAM REPORTS

PCMA FIELD MISSIONS AND PROJECTS IN 2009 (WITH MAP) .....	19
---	----

## EGYPT

### ALEXANDRIA

ALEXANDRIA KOM EL-DIKKA: EXCAVATIONS AND PRESERVATION WORK.	
PRELIMINARY REPORT 2008/2009	
<i>Grzegorz Majcherek</i> .....	27
APPENDIX: AUDITORIUM E: EXPLORATION IN SEASON 2009	
<i>Karol Juchniewicz, Katarzyna Lach</i> ... ..	43
KOM EL-DIKKA 2005–2009: SELECTED ANTHROPOLOGICAL RESEARCH	
<i>Robert Mahler</i> .....	49

### MAREA

MAREA. REPORT 2009	
<i>Hanna Szymańska, Krzysztof Babraj</i> .....	59
MAREA 2009: POTTERY FROM THE EXCAVATIONS	
<i>Anna Drzymuchowska</i> .....	72

### MARINA EL-ALAMEIN

MARINA EL-ALAMEIN. CONSERVATION WORK IN THE 2009 SEASON	
<i>Stanisław Medeksza, Rafał Czerner, Grażyna Bąkowska with contributions by I. Fuks-Rembisz, W. Grzegorek, G. Majcherek, M. Mrozek-Wysocka, P. Zambrzycki</i> .....	79



## CONTENTS

---

### TELL EL-RETABA

#### TELL EL-RETABA: SEASON 2009

*Stawomir Rzepka, Jozef Hudec* ..... 107

#### APPENDIX: TELL EL-RETABA: ARCHAEOBOTANICAL STUDIES

*Claire Malleson* ..... 118

#### TELL EL-RETABA 2009: THE POTTERY

*Anna Wodzińska* ..... 124

### TELL EL-FARKHA

#### TELL EL-FARKHA (GHAZALA). SEASON 2009

*Marek Chłodnicki, Krzysztof M. Ciałowicz* ..... 135

### SAQQARA

#### SAQQARA 2008–2009

*Karol Mysliwiec* ..... 157

#### APPENDIX: CONSERVATION WORK IN SAQQARA (2008–2009)

*Zbigniew Godziejewski* ..... 167

#### SAQQARA 2008–2009: THE POTTERY

*Teodozja I. Rzeuska* ..... 175

### NAQLUN

#### NAQLUN (NEKLONI) EXCAVATIONS IN 2008–2009

*Włodzimierz Godlewski* ..... 193

#### APPENDIX: NAQLUN 2008: ARCHAEOBOTANICAL STUDIES

*Jarosław Zieliński* ..... 210

#### REFUSE DUMP IN SECTOR B IN NAQLUN: EXCAVATION REPORT 2008–2009

*Tomasz Derda, Dorota Dzierzbicka* ..... 212

#### POTTERY FROM THE REFUSE DUMP UNDER UNIT B.26 IN NAQLUN

*Katarzyna Danys-Lasek* ..... 222

#### TWO BURIALS FROM CEMETERY A IN NAQLUN: ARCHAEOLOGICAL AND ANTHROPOLOGICAL REMARKS

*Dorota Dzierzbicka, Marzena Ożarek* ..... 233

#### ON THE COLLECTION OF WOODEN FINDS FROM NAQLUN AGAIN

*Jarosław Zieliński, Iwona Zych* ..... 244

### DEIR EL-BAHARI

#### CONSERVATION WORK IN THE HATSHEPSUT TEMPLE IN DEIR EL-BAHARI (2009)

*Rajmund Gazda* ..... 251

#### SANDSTONE SPHINXES OF QUEEN HATSHEPSUT FROM DEIR EL-BAHARI: PRELIMINARY REMARKS

*Agata Smilgin* ..... 255

## CONTENTS

---

TEMPLE OF TUTHMOSIS III IN DEIR EL-BAHARI IN 2008 AND 2009: WORK IN THE STORES AND FIELD <i>Monika Dolńska</i> .....	261
THE TEMPLE OF TUTHMOSIS I REDISCOVERED <i>Jadwiga Iwaszczuk</i> .....	269
DAKHLEH OASIS	
DAKHLEH OASIS PROJECT. PETROGLYPH UNIT: ROCK ART RESEARCH, 2009 <i>Ewa Kuciewicz, Michał Kobusiewicz</i> .....	279
SUDAN	
OLD DONGOLA	
DONGOLA 2008–2009 <i>Włodzimierz Godlewski</i> .....	289
APPENDIX: CONSERVATION OF WALL PAINTINGS INSIDE THE FORMER THRONE HALL OF THE MAKURIAN KINGS IN DONGOLA (2009 SEASON) <i>Cristobal Calaforra-Rzepka</i> .....	312
DONGOLA 2009: POTTERY FROM BUILDING I (KOM A) <i>Katarzyna Danyś-Lasek</i> .....	315
WALL INSCRIPTIONS IN A BURIAL VAULT UNDER THE NORTHWEST ANNEX OF THE MONASTERY ON KOM H (DONGOLA 2009) <i>Adam Łajtar, Jacques van der Vliet</i> .....	330
CRYPTS 1 AND 2 IN THE NORTHWEST ANNEX OF THE MONASTERY ON KOM H IN DONGOLA: REPORT ON THE EXPLORATION IN 2009 <i>Włodzimierz Godlewski, Robert Mahler, Barbara Czaja-Szewczak</i> .....	338
EL-ZUMA	
THE POTTERY FROM FOUR TUMULI GRAVES IN EL-ZUMA (2009) <i>Edyta Klimaszewska-Drabot, Ewa Czyżewska</i> .....	361
FOURTH CATARACT	
RESEARCH IN THE PCMA UW CONCESSION ON THE FOURTH CATARACT (HAMDAB DAM RESCUE PROJECT). INTERIM REPORT 2009 <i>Marek Chłodziński</i> .....	377
ROCK ART RESEARCH IN THE FOURTH CATARACT REGION, SEASON 2009 <i>Ewa Kuciewicz, Andrzej Rozwadowski</i> .....	387
EXCAVATIONS IN 2009 IN THE ENVIRONS OF EL-AR VILLAGE (FOURTH CATARACT REGION, SUDAN) <i>Anna Longa</i> .....	393
EL-AR 31: EXCAVATIONS OF LATE/POST-MEROITIC TUMULI. PRELIMINARY REPORT <i>Artur Buszek, Michał Kurzyk</i> .....	399

## CYPRUS

### NEA PAPHOS

NEA PAPHOS. SEASON 2009

*Henryk Meyza in cooperation with Wiktor Andrzej Daszewski, Aleksandra Brzozowska, Joanna Michalska, Joanna K. Rądkowska, and Monika Więch*..... 407

## LEBANON

### JIYEH

PRELIMINARY REPORT ON THE 2008 AND 2009 EXCAVATION SEASONS AT JIYEH (PORPHYREON)

*Tomasz Waliszewski, Karol Juchniewicz, Mariusz Gwiazda* ..... 423

APPENDIX 1. SUNKEN VESSELS IN LATE ROMAN AND BYZANTINE HOUSES IN AREA D

*Mariusz Gwiazda* ..... 439

APPENDIX 2. PRELIMINARY REMARKS ON THRESHOLDS FROM PRIVATE HOUSES IN JIYEH (PORPHYREON)

*Mariusz Gwiazda* ..... 441

LOCAL HELLENISTIC 'PHOENICIAN'-TYPE AMPHORA AND OTHER POTTERY VESSELS FROM EXCAVATIONS IN JIYEH (PORPHYREON) (SEASONS 2008–2009)

*Urszula Wicenciak* ..... 446

GROUND AND AERIAL PHOTOGRAMMETRIC DOCUMENTATION IN JIYEH (PORPHYREON)

*Miron Bogacki* ..... 454

## SYRIA

### PALMYRA

POLISH ARCHAEOLOGICAL MISSION TO PALMYRA. SEASONS 2008 AND 2009

*Grzegorz Majcherek* ..... 459

### HAWARTE

EXCAVATIONS IN HAWARTE 2008–2009

*Michał Gawlikowski* ..... 481

GLASS FINDS FROM THE MITHRAEUM IN HAWARTE

*Krzyszyna Gawlikowska* ..... 496

### TELL ARBID

TELL ARBID 2008–2009. PRELIMINARY REPORT ON THE RESULTS OF THE THIRTEENTH AND FOURTEENTH SEASONS OF POLISH-SYRIAN EXCAVATIONS

*Piotr Bieliński* ..... 511

---

## CONTENTS

---

ADAM MICKIEWICZ UNIVERSITY EXCAVATIONS IN SECTOR P AT TELL ARBID  
(SPRING 2009)

*Rafał Koliński* ..... 537

### TELL QARAMEL

TELL QARAMEL: EXCAVATIONS 2009

*Ryszard F. Mazurowski* ..... 559

## PAM STUDIES

ADULT BURIALS OF NINEVITE 5 DATE ON TELL ARBID (2007–2008)

*Dariusz Szela* ..... 585

CHARIOT TERRACOTTA MODELS FROM TELL ARBID

*Mattia Raccidi* ..... 605

NEW PROTODYNASTIC *SEREKHS* FROM THE NILE DELTA: THE CASE OF FINDS  
FROM TELL EL-FARKHA

*Mariusz A. Jucha* ..... 625

*PITHOS*-TYPE VESSELS FROM CHHÎM: PRELIMINARY ASSESSMENT OF FINDS  
FROM 1996–2009

*Zofia Kowarska, Szymon Lenarczyk* ..... 643

BUILDINGS ON SITE B AT NAQLUN (NEKLONI)

*Szymon Maślak* ..... 653

ZOOARCHAEOLOGICAL ANALYSIS OF MATERIAL FROM CISTERNS STR 1/96–97  
AND HA/NEH 2.16.3 IN NEA PAPHOS

*Ewelina Tepe* ..... 677

ANIMAL BONE REMAINS FROM SHEIKH ABD EL-GURNA:  
ISSUES AND OPPORTUNITIES

*Urszula Iwaszczuk* ..... 691

ANIMALS IN ROCK ART. RESULTS OF ARCHAEOZOOLOGICAL RESEARCH  
AT THE SITE OF EL-GAMAMIYA 67 (FOURTH CATARACT, SUDAN)

*Marta Osypińska* ..... 703

INDEX OF SITES ..... 715

GUIDELINES FOR AUTHORS ..... 716