

Amphoras on Knidian amphoras

Zofia Sztetyłło

Professor *emeritus*, University of Warsaw

The upper part of an amphora with both handles preserved was discovered in 1991 at the site of Marina el-Alamein in Egypt. The excavations were carried out by a team from the Polish Centre of Mediterranean Archaeology headed by Prof. Wiktor Andrzej Daszewski. The amphora, inv. no. M AR/3/91, was identified as a late Knidian product by Grzegorz Majcherek (1991: 53, Fig. 1.5, note 8). Both handles proved to be stamped, one rectangular stamp being completely effaced, the other bearing the image of a handleless amphora and an obliterated inscription [*Figs 1–2*]. The present article is the first publication of these stamps and its objective is to trace the motif of an amphora in Knidian stamp iconography in an effort to place a more specific date on the Marina el-Alamein find.

Stamps with the image of an amphora are first recorded in Period IVA (approx. 188–167 BC)¹ on the round stamps of the eponym Ἀπολλωνίδας and fabricant Ἄνδροστένης (Grace, Savvatianou-Petropoulakou 1970: 324, E 50; Étienne, Braun 1986: 240, no. 45; Sztetyłło 1990: 202, no. 128; Jöhrens 1999: 121, no. 344; Koehler 1982: 285, note 6). In Period IVB (approx. 167–146 BC), round stamps with the image of an amphora were used by the eponym Εὐφραγόρας and the fabricant Ἐρμιππος (Marcadé 1954: 220; Étienne, Braun 1986: 242, nos 65–66); a rectangular stamp was produced for the eponym Εὐφραγόρας and the fabricant Κλέανδρος (Jöhrens 1999: 156, no. 477). In Period V (approx. 146–108 BC), stamps with amphora representations were being used by the eponym Ἄγαθοκλῆς and the fabricant Κλειτίων. Jöhrens published two rectangular stamps of this pair, the device on these stamps being a horizontally featured amphora without handles (Jöhrens 1999: 190–191, nos 611–612). Another rectangular stamp from this particular period bears the image of an amphora with handles, lying horizontally below the inscription; it belonged to the eponym Ἡρόφαντος and the fabricant Περιγένης (Lenger 1955: 491, no. 15; Jöhrens 1999: 197, no. 643). An analogous image occurs on a stamp of the eponym Ἱεροκλῆς and fabricant Βούλαρχος, which Grace believed to be from the third quarter of the 2nd century BC (Grace 1952: 531, no. 7, Pl. 20.7; Kent 1953: 129, Pl. 45; Koehler 1982: 285, note 6; *Tell Atrib* 2000: 120, no. 133). A rectangular stamp with an amphora with handles

¹ The overall framework of Knidian stamp chronology was determined by Virginia Grace (1985: 31) and updated by Gerhard Jöhrens (1999: 95, Pl. 8).

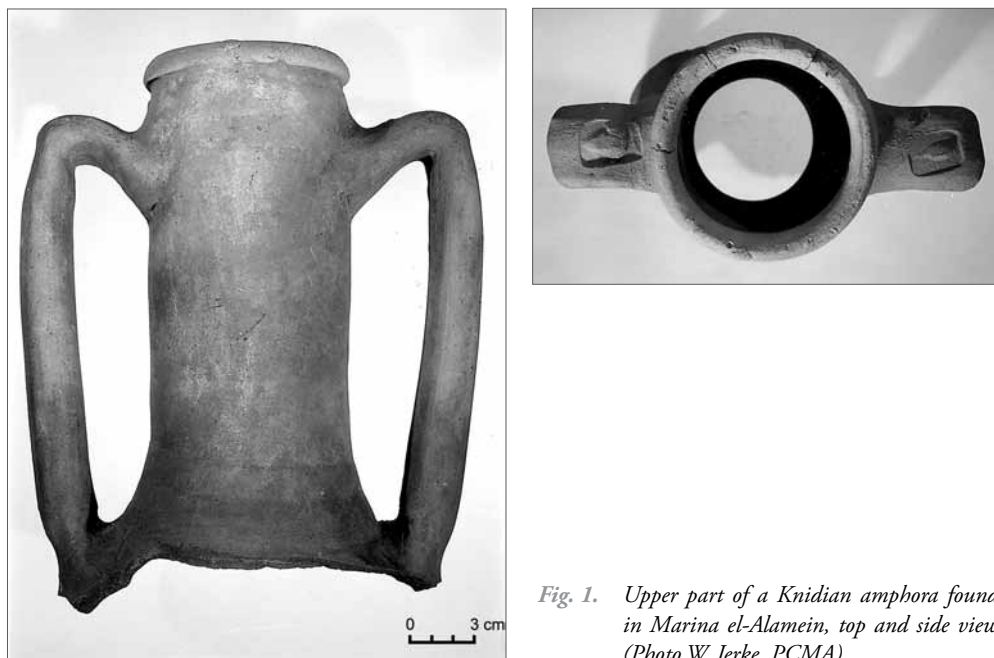


Fig. 1. Upper part of a Knidian amphora found in Marina el-Alamein, top and side view (Photo W. Jerke, PCMA)



Fig. 2. Stamps with the image of an amphora from the handles of the Knidian amphora from Marina el-Alamein (Photo W. Jerke, PCMA)

imaged horizontally below the inscription occurs also in Period VIA (approx. 107–98 BC); it belonged to the eponym Ἀριστομήδης, the fabricant Μάρων and the duoviri Εὐκράτης and Πολύχαρμος (Grace 1934: 250, no. 130; Grace 1956: 159, no. 164; Étienne 1986: 250, no. 197; Jöhrens 1999: 226, 289, no. 754–756, AS 74). Rectangular stamps with a double-handled amphora lying horizontally in the bottom part of the field were also known in Period VIB (approx. 97–88 BC), having been used by the eponym Διονύσιος and the fabricant Πτολεμαῖος (Grace 1934: 262, no. 175; Jefremow 1995: 188, no. 386; Jöhrens 1999: 228, 290, no. 762, AS 78). This pair also had a stamp with the image of a handleless amphora (Jöhrens 1999: 228, no. 763). Such a lying handleless amphora below the inscription occurs also on a rectangular stamp of the duoviri Ἀγίας and Ἀριστογένης (Jöhrens 1999: 230, no. 773). Grace linked these duoviri with the eponym Ἀρίσταινος (Grace 1985: 35). The fabricant Διοσκουρίδας, placed by Grace in Period VIC (Grace 1985: 35), was also connected with Ἀρίσταινος (Grace, Savvatianou-Petropoulakou 1970: 341, E 134–135), whom she placed in Period VIB (Grace 1985: 32). Finally, in the post-Knidian Period VII (late 1st century BC), there is an elongated rectangular stamp bearing the image of an amphora depicted upright and the inscription Θεῦ above it. Stamps with this abbreviation without associated symbols were dated by Grace to the Roman period without specifying a provenience (Grace 1934: 288, nos 263–265). Stamps of an analogous nature were referred to as Knidian by Marie-Thérèse Lenger (1955: 494, nos 32–33). A rectangular stamp with the image of an amphora and the abbreviation Θεῦ was identified by Jöhrens as Late Knidian (late 1st century BC) (Jöhrens 1999: 236, no. 797). An elongated rectangular stamp with rounded shorter edges and a representation of an amphora with handles and the name Κλευπίτης was assigned by Jöhrens a Late Knidian date as well (1999: 237, no. 799). A stamp with elongated rectangular shape and rounded upper edge, bearing the image of an amphora with handles and a damaged inscription was identified by Ino Nicolaou as a Knidian stamp of Period VIC (?), near to a stamp of the eponym Κλευπίτης (Nicolaou 2005: 254, no. 71), most probably with the name of Ἡροξείνος, which is not known however on the island of Knidos. Another rectangular stamp with the image of an amphora did not bear a name (Grace, Savvatianou-Petropoulakou 1970: 354, E 220, second quarter of the 1st century BC).

The stamp from Marina el-Alamein is nearest to stamps from Period VII and can be dated most probably to the end of the 1st century BC.

Other devices from Knidian stamp iconography

Like the amphoras from any center, the Knidian vessels acted foremost as containers for export products. Volume standards were established by the eponyms and their decisions and the changes they introduced impacted not only the volume, but also the shape of the vessels (Grace 1949: 180, 183, notes 20, 35). Modifications concerned mainly the shape of the body, height of the neck, angle between handles and body, shape and length of the foot.

Bucranium

The predominant image in Knidian stamp iconography is the bucranium. It can be found on both round and rectangular stamps. Like the lion protome and rose flower, this motif was introduced in the repertoire of Knidian devices around 188–182 BC (beginning of Period IVA) by the fabricant Ἀριστοκλῆς, son of the prominent Rhodian fabricant Δαμοκράτης, working on Rhodos and Knidos (Grace 1985: 48, 49, no. 15, 19, Pl. 3.19; cf. Grace 1985: 10, note 18). The bucranium continued to appear as a device on Knidian stamps through the end of Period VI (Nicolau 2005: 255, no. 753).

Prora

Stamps with representations referring to the marine transport of amphorae were numerous. The devices include mainly fragments of ships or parts of ship tackle. The *prora* or prow of a ship was used on stamps from **Period IVA** belonging to the eponym Βίων and fabricant Ξάνθος (Jöhrens 1999: 141–142, no. 428), and in **Period IVB** on the stamps of:

- eponym Ξενοκλῆς and fabricant Ἀρίστανδρος (Jöhrens 1999: 151, no. 459),
- eponym Ἑρμόφαντος and fabricant Εὔβουλος (Jöhrens 1999: 156, no. 479),
- eponym Μένιππος and fabricant Ξάνθος (Grace 1934: 252, nos 135–137; Jöhrens 1999: 163–164, nos 512–513),
- eponym Εὐφραγόρας and fabricant Φύλατος (Jöhrens 1999: 165, no. 518).

In **Period V**, the device was used by the following:

- eponym Δράκων and fabricant Αἰνέας (Jöhrens 1999: 173, no. 545),
- eponym Ἱεροκλῆς and fabricant Αἰνέας (Jöhrens 1999: 173–174, nos 546–547; Nicolau 2005: 252–253, no. 745),
- eponym Ἐπινικίδας and fabricant Μενέστρατος (Jöhrens 1999: 193, no. 624),
- eponym Μενεκράτης and fabricant Μενέστρατος (Jöhrens 1999: 194, no. 625–626).

In **Period VI**, the *prora* appeared on the stamps of:

- duoviri Πολίτας and Κράτης (Grace 1934: 266, no. 189; Jöhrens 1999: 201, no. 658),
- eponym Ἀριστομήδης and fabricant Ἀγαθίνος (Ἀγαθεῖνος) (Jöhrens 1999: 203, nos 659–660),
- eponym Δαίδαλος and fabricant Ἀγαθίνος (Ἀγαθεῖνος) (Jöhrens 1999: 203, no. 661),
- eponym Ἀριστόδαμος and fabricant Ἀντίοχος (Jöhrens 1999: 207–208, no. 677),
- duoviri Εὐπόλεμος and Λάχης, associated with the eponym Εὐφραγόρας (Jöhrens 1999: 208, no. 679),
- eponym Ἑρμών and fabricant Εὐφραντίδας,
- duoviri Μελάντας and Ἀριστόβουλος (Jöhrens 1999: 222–223, nos 740–741).

Anchor

Anchors as devices on Knidian stamps were fairly numerous in Periods III through VI. In Period III (approx. 220–188 BC), the anchor was found on a stamp of the eponym Δαμάτριος and the fabricant Ἀρισταγόρας (Grace 1934: 254, nos 144–145; Jöhrens 1999: 102, no. 268). Also dating from Period III and the beginning of Period IV is a stamp of the eponym Ἐπιφάνης and the fabricant Ἀρισταγόρας (Jöhrens 1999: 102, no. 269). During **Period IVA** the anchor device appeared on the stamps of:

- eponym Ἀγαθοκλῆς and fabricant Θευδόσιος (Grace 1934: 253, no. 141; Jöhrens 1999: 132, no. 389),
- eponym Ἄντανδρος and fabricant Θευδόσιος (Jöhrens 1999: 132, no. 390),
- eponym Ἀπολλωνίδας and fabricant Ἀρίστων (Jöhrens 1999: 123, no. 352),
- eponym Ἀπολλώνιος and fabricant Δημήτριος (Jöhrens 1999: 124–125, no. 356),
- eponym Ἀγέστρατος and fabricant Δημήτριος (Jöhrens 1999: 124, no. 355),
- phrourarchos Ἀριστείδας and fabricant Θευδόσιος (Jöhrens 1999: 133, no. 391),
- eponym Δρακοντομένης and fabricant Θευδόσιος (Jöhrens 1999: 133, nos 392–393),
- eponym Ἐρμοκράτης and fabricant Θευδόσιος (Jöhrens 1999: 133, no. 394),
- eponym Ἐρμοκράτης and fabricant Ἴππόλοχος (Jöhrens 1999: 138, no. 416),
- eponym Εὐκρατίων and fabricant Θευδόσιος (Jöhrens 1999: 133–134, no. 395),
- eponym Θεύδοτος and fabricant Θευδόσιος (Jöhrens 1999: 134, no. 396),
- eponym Θεύφρων and fabricant Θευδόσιος (Jöhrens 1999: 134, nos 397–398),
- eponym Κληνόπολις and fabricant Θευδόσιος (Jöhrens 1999: 134–135, no. 399),
- eponym Φύλτατος and fabricant Θευδόσιος (Jöhrens 1999: 135, no. 400).

In **Period IVB** one should list stamps with anchor device used by the following:

- eponym Ἀμοτέλης and fabricant Διονύσιος (Jöhrens 1999: 155, no. 473),
- eponym Ἀναξιππίδας and fabricant Ἀπολλώνιος (Grace 1934: 256, no. 152; Lenger 1955: 489, no. 7; Jöhrens 1999: 149, no. 450),
- eponym Δίων and fabricant Ἐπιφάνης (Jöhrens 1999: 155, no. 475),
- eponym Ἐπίχαρμος and fabricant Ἡρόδοτος (Jöhrens 1999: 157, no. 483),
- eponym Κλεῦμβροτος and fabricant Θευδόσιος (Jöhrens 1999: 157, no. 484),
- eponym Μένιππος and fabricant Μόσχος (Jöhrens 1999: 163, no. 509),
- eponym Τελεκρέων and fabricant Θευδόσιος (Jöhrens 1999: 158, no. 485).

The anchor device on stamps from **Period V** include the following:

- eponym Ἀγαθοκλῆς and fabricant Μένης (Jöhrens 1999: 194, no. 628),
- damiourgos Διονύσιος and fabricant Ἀριστοκλῆς (Jöhrens 1999: 177, no. 559),
- eponym Εὐφράνωρ and fabricant Χαρμοκράτης (Jöhrens 1999: 198, no. 647),
- eponym Καρνεόδοτος and fabricant Ἀριστοκλῆς (Jöhrens 1999: 178–179, no. 563),

- damiourgos Ἀγαθοκλῆς and fabricant Εὐφραντίδας (Jöhrens 1999: 188–189, nos 601–603),
- eponym Δράκων and fabricant Εὐφρόσυνος (Jöhrens 1999: 189, no. 604),
- duoviri Δράκων and Ἀριστοκλῆς (Nicolaou 2005: 251–252, no. 743),
- eponym Ἡρόφαντος and fabricant Μοσχίων (Jöhrens 1999: 195, no. 632),
- eponym Ἱεροκλῆς and fabricant Μοσχίων (Jöhrens 1999: 195, no. 633),
- eponym Πυθόνικος and fabricant Μοσχίων (Jöhrens 1999: 195, no. 634),
- eponym Χρύσιππος and fabricant Ἀγαθῖνος (Ἀγαθεινός) (Jöhrens 1999: 172, no. 539).

During **Period VI** stamps with anchors were used by the following:

- eponym Δαίδαλος, duoviri Ἀρίσταινος and Ἐρατίδας and fabricant Ἀριστοκλῆς (Jöhrens 1999: 208–209, no. 681–682),
- duoviri Πολίτης and Κράτης, associated with the eponym Δαμόκριτος (Jöhrens 1999: 223, no. 742),
- eponym Σωσίφρων and fabricant Εὐφρόσυνος (Jöhrens 1999: 223, nos 743–744),
- duoviri Διόγνητος and Ἀπολλόδωρος (Jöhrens 1999: 231, no. 774),
- duoviri Ἐρατίδας and Ἀρίσταινος (Jöhrens 1999: 231, no. 776).

Oar and rudder

The oar and rudder are also devices that can be linked to marine transport, but they are less frequent on Knidian stamps compared to the prora and anchor. In Period IVA these devices were used by the eponym Ἀρίσταρχος and the fabricant Εὐφρόσυνος (Jöhrens 1999: 131, no. 385). Coming from the workshop of Εὐφρόσυνος is a stamp of the eponym Φύλατος with a similar representation (Jöhrens 1999: 131, no. 386). The device was also recorded on a stamp of the damiourgos Ἀπολλωνίδας and the fabricant Σωτίων (Jöhrens 1999: 143, no. 434). **Period IVB** includes stamps with the devices of oar and rudder representing the following:

- eponym Εὐφραγόρας and fabricant Ἀρίστανδρος (Jöhrens 1999: 151, no. 458),
- eponym Ξενοκλῆς and fabricant Ἀρίστανδρος (Jöhrens 1999: 151, no. 459),
- eponym Τελεκρέων and fabricant Ἀρίστανδρος (Jöhrens 1999: 152, no. 460–461),
- eponym Ἀριστοκλῆς and fabricant Ἰσίδωρος (Jöhrens 1999: 159, no. 494),
- eponym Εὐφραγόρας and fabricant Ἀρίστων (Jöhrens 1999: 152, no. 463),
- eponym Ἀμύντας and fabricant Χαρμοκράτης (Jöhrens 1999: 165, no. 520).

The rudder was used on stamps from **Period V** belonging to:

- eponym Ἀγαθοκλῆς and fabricant Εὐφρων (Jöhrens 1999: 189, no. 605),
- eponym Ἀσκληπιόδωρος and fabricant Χαρμοκράτης (Jöhrens 1999: 198, no. 646),
- eponym Θαλιμβροτίδας and fabricant Ξενοκλῆς (Jöhrens 1999: 197, no. 639),
- eponym Καλλιδιάμας and fabricant Ξενοκλῆς (Jöhrens 1999: 197, nos 640–641),

- eponym Μενεκράτης and fabricant Ξενοκλής (Jöhrens 1999: 197, no. 642),
- eponym Νικόμαχος and fabricant Θεουκλής (Lenger 1955: 496–497, no. 40; Jöhrens 1999: 190, nos 609–610),
- duoviri Δράκων and Ἀριστοκλής (Nicolaou 2005: 251–252, no. 743).

Bee

Images referring to the content of the amphoras are less common than those linked to marine transport. One example is the bee device which could suggest honey as the product held in the vessel. A Knidian amphora that was discovered on Rhodos has one handle impressed with a rectangular stamp of the eponym Ἀρχιπιδάδας with a branch device and the other with a rectangular stamp of the fabricant Ἀθήνιππος and the image of a bee (Grace 1985: 46, nos 4a–4b, type of amphora: Pl. 2.1.). Grace considered this stamp as originating from the one but last decade of the 3rd century BC (Period III, approx. 220–210 BC) (Grace 1985: 16). The collection of the Graeco-Roman Museum in Alexandria includes a round stamp with branch device of the eponym Ἀρχιπιδάδας (Grace 1985: 47, no. 7) and a round stamp with a bee belonging to the fabricant Ἀθήνιππος (Grace 1985: 47, no. 8, Pl. 2.7–8). A damaged round stamp with the first letters of the name and a bee device, dated by Grace to the 3rd century BC(?) (Grace 1934: 280, no. 234) should perhaps be attributed to this fabricant as well. In Period IVA a bee stamp was used by the eponym Ἀπολλωνιδάδας and fabricant Ἀπολλώνιος (Jöhrens 1999: 122, no. 347) and in Period IVB by the eponym Ἀμοτέλης and fabricant Ἀγαθίνος (Ἀγαθεῖνος) (Jöhrens 1999: 146, no. 440). **Period V** saw stamps with bee devices being used by the following:

- eponym Ἀσκληπιόδωρος and fabricant Ἀγαθίνος (Jöhrens 1999: 169, no. 530),
- eponym Καλλιδάμας and fabricant Ἀγαθίνος (Jöhrens 1999: 171, no. 536),
- eponym Ἐπινικιάδας and fabricant Διονύσιος (Jöhrens 1999: 185, no. 585),
- eponym Ἀγατοκλής and fabricant Ἐπιφάνης (Jöhrens 1999: 186, no. 590),
- eponym Δράκων and fabricant Ἐπιφάνης (Jöhrens 1999: 186, no. 591),
- eponym Ἡρόφαντος and fabricant Ἐπιφάνης (Jöhrens 1999: 186, no. 592),
- eponym Ἱεροκλής and fabricant Ἐπιφάνης (Jöhrens 1999: 186–187, no. 593),
- eponym Καρνεόδοτος and fabricant Ἐπιφάνης (Jöhrens 1999: 187, no. 594),
- eponym Πυθόνικος and fabricant Ἐπιφάνης (Jöhrens 1999: 187, no. 595).

In **Period VI**, the bee device appeared on the stamps of the following:

- eponym Στρατοκλής and fabricant Ἀρχαγόρας (Jöhrens 1999: 212, no. 694),
- duoviri Κλεύπολις and Ἰπόστρατος (Criscuolo 1982: 112, no. 139; Jöhrens 1999: 212, no. 695–696), associated with the eponym Στρατοκλής,
- eponym Σωσίφρων and fabricant Ἐπιφάνης (Jöhrens 1999: 221, nos 734–735, cf. Jöhrens 1999: 288, AS 70),
- duoviri Κράτερος and Νικασίβουλος, associated with the eponym Ἰππαρχος (cf. Grace 1985: 35; Jöhrens 1999: 233, nos 787–788 and AS83–AS84; Nicolaou 2005: 256, no. 755).

Bunch of grapes

A bunch of grapes represented as a device on Knidian stamps should be linked to the transport of wine. Stamps with this device occurred from Period IV through Period VI.

In **Period IV**, they were used by the following:

- eponym Ἀσκληπιόδωρος and fabricant Θεουφείδης (Θευφίδης) (Criscuolo 1982: 110, no. 135; Jöhrens 1999: 137, no. 408),
- eponym Ἀμύντας and fabricant Θεουφείδης (Θευφίδης) (Jöhrens 1999: 158, no. 486),
- eponym Εὐφραγόρας and fabricant Χαρμοκράτης (Jöhrens 1999: 167, no. 525).

In **Period V**, the following users of such stamps have been recorded:

- eponym (*damiouros*) Κυδοκλῆς and fabricant Ἀγαθῖνος (Jöhrens 1999: 171, no. 537),
- eponym Ἐπινικίδης and fabricant Ἀθήναιος (Jöhrens 1999: 172–173, no. 543),
- eponym Θαλμβροτίδης and fabricant Μένης (Jöhrens 1999: 195, no. 630),
- eponym Φίλιππος and fabricant Μένης (Jöhrens 1999: 195, no. 631),
- eponym Φίλιππος and fabricant Χαρμοκράτης (Jöhrens 1999: 199, nos 649–650).

For **Period VI** the recorded stamps with a bunch of grapes as the device include the following:

- eponym Ἀγίας and fabricant Ἀπολλόδοτος (Jöhrens 1999: 208, no. 680),
- eponym Ἀγίας and fabricant Ἐπίγονος (Jöhrens 1999: 219–220, no. 728),
- duoviri Ἀγαθοκλῆς and Ἀρτέμων (Grace 1934: 265, no. 185; Jöhrens 1999: 220, no. 729), associated with the eponym Ἀγίας in Period VIB (Grace 1985: 35),
- duoviri Ἀριστόβουλος and Μελάντας (Grace 1934: 365, no. 187; Jöhrens 1999: 228, no. 761; Lenger 1955: 492, nos 20–21), associated with the eponym Ἐρμῶν in Period VIB (Grace 1985: 35),
- and also the partly damaged stamp of the eponym Ἐρμῶν and fabricant Πολύνικος (Jöhrens 1999: 227, no. 760).

Heroes and deities

Images connected with heroes and deities also hold a significant place in the iconography of Knidian stamps. These motifs were meant to ensure that everything went well with the commercial transactions at hand. The trident and dolphins should presumably be linked with Poseidon, the *thyrsos* with Dionysos and the *caduceus* and herm with Hermes.

References

Criscuolo, L.

1982 *Bolli d'anfora greci e romani. La Collezione dell'università Cattolica di Milano* [=*Studi di Storia Antica* 6], Bologna

Étienne, R., Braun, J.-P.

1986 *Ténos I. Le sanctuaire de Poseidon et d'Amphitrite I. Texte* [=BEFAR 263], Athènes: École Française d'Athènes

Grace, V.R.

1934 Stamped amphora handles found in 1931–1932, *Hesperia* 3/3. *The American Excavations in the Athenian Agora, Fourth Report*, 197–310

1949 Standard pottery containers of the Ancient Greek world [in:] *Commemorative Studies in Honor of Theodore Leslie Shear* [=*Hesperia Suppl.* 8], Princeton, NJ: The American School of Classical Studies at Athens, 175–189

1952 Timbres amphoriques trouvés à Délos, *BCH* 76, 514–540, Pls 19–26

1956 Stamped wine jar fragments [in:] L. Talcott, B. Philippaki, G.R. Edwards, V.R. Grace (eds), *Small Objects from the Pnyx II* [=*Hesperia Suppl.* 10], Princeton, NJ: The American School of Classical Studies at Athens, 113–270

1985 The Middle Stoa dated by amphora stamps, *Hesperia* 54/1, 1–54

Grace, V.R., Savvatianou-Petropoulakou, M.

1970 Les timbres amphoriques grecs [in:] *L'ilot de la Maison des Comédiens* [=*Exploration Archéologique de Délos* 27], Paris: de Boccard, 277–382

Jefremow, N.

1995 *Die Amphorenstempel des hellenistischen Knidos* [=*Quellen und Forschungen zur antiken Welt* 19], München: Tuduv

Jöhrens, G.

1999 *Amphorenstempel im Nationalmuseum von Athen. Zu den von H.G. Lolling aufgenommenen "unedierten Henkelschriften"*, Mainz: Philipp von Zabern

Kent, J.H.

1953 Stamped amphora handles from the Delian temple estates [in:] G.E. Mylonas, D. Raymond (eds), *Studies Presented to David Moore Robinson on his 70th Birthday II*, Saint Louis, MS: Washington University, 127–134

Koehler, C.G.

1982 Amphoras on amphoras, *Hesperia* 51/3, 284–292

Lenger, M.-T.

1955 Timbres amphoriques trouvés à Argos, *BCH* 79, 484–508

Majcherek, G.

1991 Egyptian and imported amphorae in Marina [in:] *Marina el Alamein. Archaeological Background and Conservation Problems. The Polish-Egyptian Preservation Mission at Marina 1988. The Polish Excavation Mission at Marina 1987-1989, I* [=*Reports of the Research Conservation Mission of PKZ* 18], Warsaw: Ateliers for Conservation of Cultural Property (PKZ), 51–54

Marcadé, J.

1954 Chronique des fouilles et découvertes archéologiques en Grèce en 1953. Délos, *BCH* 78, 217–222

Nicolaou, I.

2005 *The Stamped Amphora Handles from the House of Dionysos* [=Paphos 5], Nicosia: Department of Antiquities

Tell Atrib

2000 Zofia Sztetyłło, *Pottery stamps* [in:] *Tell Atrib 1985–1995 I* [=Travaux du Centre d'Archéologie Méditerranéenne de l'Académie Polonaise des Sciences 34], Varsovie: Research Centre for Mediterranean Archaeology, Polish Academy of Sciences; Neriton, 53–168

Sztetyłło, Z.

1990 Timbres céramiques des fouilles polonaises à Alexandrie (1974–1979), *EtTrav* 14, 159–212

ABBREVIATIONS

AA	<i>Archäologischer Anzeiger</i> , Berlin
AAAS	<i>Annales archéologiques arabes de Syrie</i> , Damas
ABSA	<i>Annual of the British School of Athens</i> , London
AJA	<i>American Journal of Archaeology</i> , New York
APF	<i>Archiv für Papyrusforschung und verwandte Gebiete</i> , Leipzig, Stuttgart
ASAE	<i>Annales du Service des Antiquités de l'Égypte</i> , Le Caire
BAAL	<i>Bulletin d'Archéologie et d'Architecture Libanaises</i> , Beirut
BABesch	<i>Bulletin antieke Beschaving</i> , Louvain
BCH	<i>Bulletin de correspondance hellénique</i> , Paris
BdÉ	<i>Bibliothèque d'étude</i> , Le Caire
BEFAR	<i>Bibliothèque des Écoles françaises d'Athènes et de Rome</i> , Rome, Paris
BIFAO	<i>Bulletin de l'Institut français d'archéologie orientale</i> , Le Caire
BSFE	<i>Bulletin de la Société française d'égyptologie</i> , Paris
CCE	<i>Cahiers de la céramique égyptienne</i> , Le Caire
CCEC	<i>Cahiers du Centre d'études chypriotes</i> , Nanterre
CdÉ	<i>Chronique d'Égypte</i> , Bruxelles
CRAI	<i>Comptes rendus de l'Académie des inscriptions et belles-lettres</i> , Paris
CSEL	<i>Corpus Scriptorum Ecclesiasticorum Latinorum</i> , Vienna
EtTrav	<i>Études et travaux</i> , Varsovie
GM	<i>Göttinger Miscellen</i> , Göttingen
GRBS	<i>Greek, Roman and Byzantine Studies</i> , Durham, NC
IEJ	<i>Israel Exploration Journal</i> , Jerusalem
JbAC	<i>Jahrbuch für Antike und Christentum</i>
JEA	<i>Journal of Egyptian Archaeology</i> , London
JGS	<i>Journal of Glass Studies</i> , New York
JHS	<i>Journal of Hellenic Studies</i> , London
JJP	<i>Journal of Juristic Papyrology</i> , Warsaw
JRA	<i>Journal of Roman Archaeology</i> , Ann Arbor, MI
JRS	<i>Journal of Roman Studies</i> , London
KHKM	<i>Kwartalnik Historii Kultury Materialnej</i> , Warszawa
LIMC	<i>Lexicon iconographicum mythologiae classicae</i> , Zurich
MDAIA	<i>Mitteilungen des deutschen archäologischen Instituts, Athenische Abteilung</i> , Berlin
MDAIK	<i>Mitteilungen des deutschen archäologischen Instituts, Abteilung Kairo</i> , Wiesbaden
MEFRA	<i>Mélanges d'archéologie et d'histoire de l'École française de Rome. Antiquité</i> , Paris
MIFAO	<i>Mémoires publiés par les membres de l'Institut français d'archéologie orientale</i> , Le Caire
NC	<i>Numismatic Chronicle</i> , London
NumAntCl	<i>Numismatica e antichità classiche</i> , Logano
OLA	<i>Orientalia Lovaniensia analecta</i> , Louvain
PAM	<i>Polish Archaeology in the Mediterranean</i> , Warsaw
RACrist	<i>Rivista di archeologia cristiana</i> , Cité du Vatican
RBK	<i>Reallexikon zur byzantinischen Kunst</i> , Stuttgart

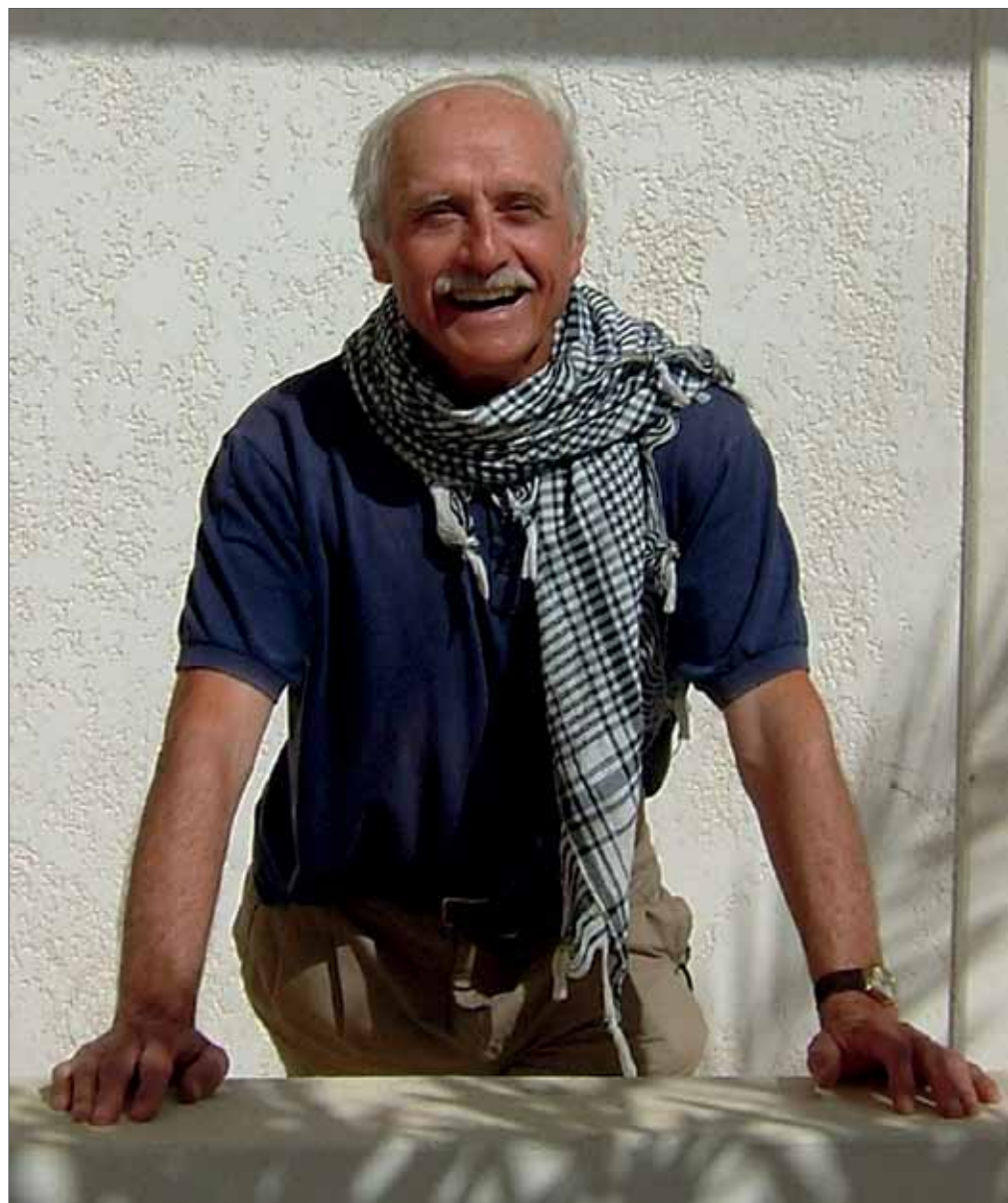
Abbreviations

<i>RDAC</i>	<i>Report of the Department of Antiquities, Cyprus, Nicosia</i>
<i>RdÉ</i>	<i>Revue d'égyptologie, Paris, Louvain</i>
<i>REPPAL</i>	<i>Revue du centre d'études de la civilisation phénicienne-punique et des antiquités libyques</i>
<i>RMNW</i>	<i>Rocznik Muzeum Narodowego w Warszawie, Warszawa</i>
<i>RSO</i>	<i>Rivista degli studi orientali, Roma</i>
<i>RTAM</i>	<i>Recherches de théologie ancienne et médiévale, Gembloux</i>
<i>RTAM</i>	<i>Recherches de théologie ancienne et médiévale, Gembloux, Louvain</i>
<i>SAAC</i>	<i>Studies in Ancient Art and Civilization, Kraków</i>
<i>VetChr</i>	<i>Vetera christianorum, Bari</i>
<i>ZPE</i>	<i>Zeitschrift für Papyrologie und Epigraphik, Bonn</i>

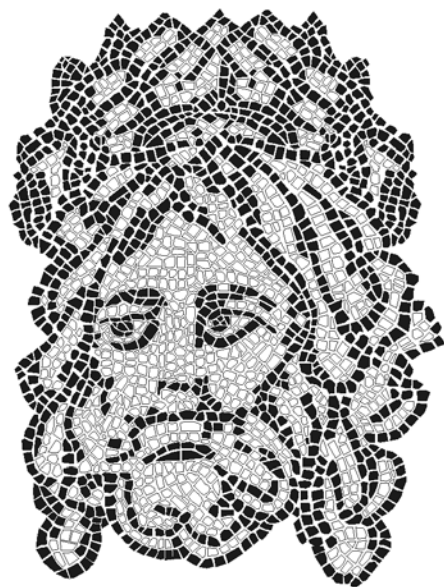
* * *

<i>DACL</i>	F. Cabrol, H. Leclercq, <i>Dictionnaire d'archéologie chrétienne et de liturgie</i> , Paris, 1907–1953
<i>LCI</i>	E. Kirschbaum, W. Braunfels (eds), <i>Lexikon der christlichen Ikonographie</i> , Rom: Herder, 1968–1976
<i>RealEnc</i>	A. Pauly, G. Wissowa, W. Kroll, K. Mittelhaus, <i>Real-Encyclopädie der classischen Altertumswissenschaft</i> , Stuttgart–München, 1893–1980

CLASSICA ORIENTALIA



CLASSICA ORIENTALIA



Essays Presented to
Wiktor Andrzej Daszewski
on his 75th Birthday

Polish Centre of Mediterranean Archaeology
University of Warsaw
Wydawnictwo DiG

Polish Centre of Mediterranean Archaeology University of Warsaw

Editorial Board

Piotr Bieliński, Krzysztof M. Ciałowicz, Wiktor Andrzej Daszewski,
Michał Gawlikowski, Włodzimierz Godlewski, Karol Mysliwiec

International Advisory Board

Jean Charles Balty, Charles Bonnet, Giorgio Buccellatti,
Stan Hendrickx, Johanna Holaubek

Reviewed independently for publication.

PCMA Publications Managing Editor: Iwona Zych

Editors: Henryk Meyza, Iwona Zych

Language consultation and proofreading: Katarzyna Bartkiewicz (French and Italian),
Iwona Zych (English and Polish)

Editorial assistance: Agnieszka Szymczak, Aleksandra Zych

Image processing: Ewa Czyżewska

Cover design: Łukasz Rutkowski

Chapter vignettes: Krzysztof Kamiński

Photo on page 2: Artur Błaszczak

Cover: Head of the god Aion from a Roman mosaic from Nea Paphos, 4th century AD

IFAO-Grec Unicode font for ancient Greek kindly provided by the IFAO, Cairo.
(www.ifao.egnet.net)

The Editors have made every effort to establish publishing rights to images reproduced from scientific publications and to obtain proper permission. We regret any omission that may have occurred.

ISBN 978–83–7181–721–2

© Polish Centre of Mediterranean Archaeology, University of Warsaw 2011

© Wydawnictwo DiG 2011

All rights reserved. No part of this publication may be reproduced or transmitted in any form or by any means, electronic or mechanical, including photocopying, recording, or any information storage or retrieval system, without permission in writing from the copyright holders

Polish Centre of Mediterranean Archaeology, University of Warsaw
ul. Nowy Świat 4, 00-497 Warszawa, Poland, e-mail: pcma@uw.edu.pl
www.pcma.uw.edu.pl

Wydawnictwo DiG, 01–524 Warszawa, al. Wojska Polskiego 4, Poland,
tel./fax: (0–22) 839 08 38, e-mail: biuro@dig.pl; <http://www.dig.pl>

Printed in Poland

TABULA GRATULATORIA

Ahmed Abd El-Fattah
Andreas Ataliotis
Marek Barański
Leonard Bartnik
Mirosław Barwik
Kamila Baturó
Kazimierz Bielenia
Dorota Bielińska
Michał Bieniada
Artur Błaszczuk
Kazimierz Błaszczuk
Sebastian Borowicz
Benedetto Bravo
Aleksandra Brzozowska
Mikołaj Budzanowski
Mariusz Burdajewicz
Halina Chłodnicka-Żarska
Marek Chłodnicki
Krzysztof Ciałowicz
Andrzej Ćwiek
Anna Dagnan Ginter
Piotr Dąbrowski
Tomasz Derda
Yiorgos Dimitriadis
Agata Dobosz
Monika Dolińska
Zbigniew Doliński
Alicja Dreżewska
Meike Droste
Maria de Jesus S. Duran Kramer
Barbara Drobnowicz
Mariusz Drzewiecki
Teresa Dziedzic
Iwona Dziemidowicz
Grzegorz Dziemidowicz
Moustafa El-Abbadie
Yousef El-Gharani
Fryne and Chryso Eliades
Elżbieta Garlikowska
Andrzej Garlikowski
Krystyna Gawlikowska

Bolesław Ginter
Andrzej Głazewski
Zbigniew Godziejewski
Tadeusz Gołgowski
Klara Górecka
Mona Haggag
Frank Haggerty
Heinz Heinen
Małgorzata Herbich
Jadwiga Iwaszczuk
Jolanta Jabłonowska-Taracha
Elżbieta Jakobielska
Stefan Jakobielski
Krzysztof Jakubiak
Elżbieta Jastrzębowska
Piotr Jaworski
Adam Jegliński
Wanda Jerke
Waldemar Jerke
Artur Kaczor
Barbara Kaim
Henrietta Kania
Jerzy Kania
Vassos Karageorghis
Małgorzata Karkowska
Janusz Karkowski
Bolesław Kobielski
Michał Kobusiewicz
Rafał Koliński
Wojciech Kołątaj
Teresa Kołątaj
Elżbieta Kołosowska
Jacek Kościuk
Stefan Karol Kozłowski
Barbara Kramer
Karla Kroepper
Aleksandra Krzyżanowska
Jack M. Kucy
Andrzej Kwaśnica
Ewa Laskowska-Kusztal
Hervé Lebrun

Jean Leclant

Andrzej Leligdowicz
Marek Lemiesz
Kazimierz Lewartowski
Joanna Lis
Magdalena Łaptaś
Dorota Ławecka
Stanisław Machała
Robert Mahler
Aleksandra Majewska
Elżbieta Makowiecka
Wiesław Małkowski
Małgorzata Martens-Czarnecka
Edyta Marzec
Szymon Maślak
Dorota Mazanek
Ryszard F. Mazurowski
Izabela Medeksza
Demetrios Michaelides
Bożena Mierzejewska
Marta Mierzejewska
Antoni Mierzejewski
Krzysztof Misiewicz
Jolanta Młynarczyk
Wanda Mossakowska
Stanisław Mossakowski
Liliana Nalewajska
Jacek Nalewajski
Jan Natkański
Ireneusz Nieduziak
Andrzej Niwiński
Miroslaw Olbryś
Ewa Orłowska-Buśko
Ewa Parandowska
Piotr Parandowski
Barbara Pawlicka
Franciszek Pawlicki
Maciej Pawlikowski
Tomasz Pelc
Karol Piasecki
Ingeborga Pietrzykowska
Waldemar Połoczanin
Jacek Przeniosło
Marek Puzkarski
Eustathios Raptou

Małgorzata Redlak
Monika Rekowski-Ruszkowska
Jerzy Rekućki
Karolina Rosińska-Balik
Łukasz Rutkowski
Ida Ryl-Preibisz
Stefan Sadowski
Doreya Said
Tadeusz Sarnowski
Tomasz Scholl
Joanna Scholl
Mervat Seif El-Din
Ryszard Sobolewski
Zbigniew Solarewicz
Andreas Sotiriadis
Marek F. Stępniewski
Grażyna Katarzyna Szafrąska
Zbigniew Szafrąski
Joanna Katarzyna Szczepkowska
Tomasz Szmagier
Andrzej Szum
Joachim Śliwa
Barbara Tkaczow
Alfred Twardecki
Rozalia Tybulewicz
Marcin Wagner
Ewa Waliszewska
Tomasz Waliszewski
Olga Wasilewska
Jackie Westwood-Dimitriadis
Dagmara Wielgosz-Rondolino
Janina Wiercińska
Przemysław Wierzbiński
Dietrich Wildung
Ewa Wipszycka-Bravo
Teresa Witkowska
Maciej Witkowski
Dariusz Wolski
Barbara Wrońska-Kucy
Zuzanna Wygnańska
Grzegorz Wyrzykowski
Zygmunt Wysocki
Mariusz Ziółkowski
Jerzy Żelazowski
Bogdan Żurawski

CONTENTS

Abbreviations.....	9
Foreword.....	11
Wiktor Andrzej Daszewski: Essay presented on his 75th birthday anniversary.....	13
Wiktor Andrzej Daszewski: List of publications.....	31
KRZYSZTOF BABRAJ	
Interprétation de la lettre τω̄ sur le vêtement du Christ et du geste de l'ogdoade sur la mosaïque absidiale de l'église Santa Pudenziana à Rome.....	43
JANINE BALTŲ	
Le rinceau d'acanthé à fond noir dans la mosaïque syrienne : l'exemple de Mariamin.....	73
JEAN-CHARLES BALTŲ	
Une « nouvelle » dédicace apaméenne à Cn. Marcius Rustius Rufinus.....	89
GRAŻYNA BĄKOWSKA-CZERNER	
Aphrodite in Egypt. Images of the goddess from Marina el-Alamein.....	97
GIUSEPPINA CAPRIOTTI-VITTOZZI	
Un gruppo scultoreo da Dendera al Museo del Cairo: due fanciulli divini e i due luminari.....	115
RAFAŁ CZERNER	
The peristyle of House H1 in the ancient town at Marina el-Alamein.....	129
KRZYSZTOF DOMŻALSKI	
Roman fine pottery from a cellar under Oil-press E.I at Chhim (Lebanon).....	147
PIOTR DYCZEK	
From the history on ancient Rhizon/Risinium: Why the Illyrian King Agron and Queen Teuta came to a bad end and who was Ballaios?.....	157
PAVLOS FLOURENTZOS	
New evidence of the aniconic iconography of Astarte-Aphrodite in Cyprus.....	175
MICHAŁ GAWLIKOWSKI	
Bagatelles épigraphiques.....	183
WŁODZIMIERZ GODLEWSKI	
Mosaic floor from the sanctuary of the EC.II cathedral in Dongola.....	193
TOMASZ GÓRECKI	
Roman ceramic <i>thymiaterion</i> from a Coptic hermitage in Thebes.....	199

TOMASZ HERBICH, HARALD VAN DER OSTEN, IWONA ZYCH Geophysi EC.II cs applied to the investigation of Graeco-Roman coastal towns west of Alexandria: the case of Marina el-Alamein.....	209
MARIA KACZMAREK Human remains from Marina el-Alamein.....	233
ZSOLT KISS Deux fragments de portraits funéraires romains de Deir el-Bahari.....	259
JERZY KOLENDO Zita, une ville oubliée de Tripolitaine.....	267
RENATA KUCHARCZYK Glass medallion in the shape of a lion's head mask.....	277
BARBARA LICHOCKA <i>Delta-epsilon</i> issues of Elagabalus and Severus Alexander.....	287
JOHN LUND Head vases of the Magenta Group from Cyprus.....	325
ADAM ŁAJTAR <i>Divus Probus</i> (?) in a fragmentary building(?) inscription in Latin found in Kato (Nea) Paphos, Cyprus.....	341
ADAM ŁUKASZEWICZ A fish from the sea.....	353
GRZEGORZ MAJCHEREK, IWONA ZYCH The Cretan presence in Marina el-Alamein.....	357
HENRYK MEYZA A mask of ἡγεμῶν θεράπων with ὄγκος(?) from Paphos.....	379
KAROL MYŚLIWIEC L'acquis des fouilles de Tell Atrib pour la connaissance de l'époque ptolémaïque.....	387
JANUSZ A. OSTROWSKI Najwcześniejsza polska wzmianka o sycylijskich <i>antiquitates</i> (with summary in English).....	399
EWDOKSIA PAPUCI-WŁADYKA The contribution of Kraków archaeologists to excavating Nea Paphos, the ancient capital of Cyprus.....	413
ANNA POŁUDNIKIEWICZ “Megarian” bowls from Tell Atrib.....	425
ZOFIA SZTETYŁO Amphoras on Knidian amphoras.....	441
HANNA SZYMAŃSKA Two “armed” terracottas from Athribis.....	451